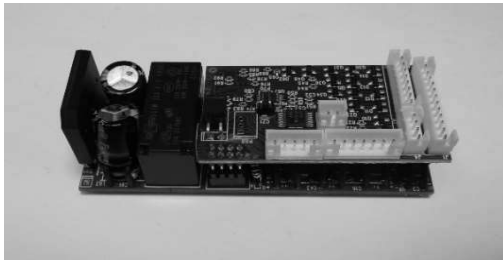


## RailKing Steam & Diesel / Electric Locomotives Delivered with Protosound 2.0 - 3Volt Electronics

This document contains the MTH product number, road name, description & catalog the product first appeared in. Use this document to identify the correct PS 3/2 Stacker Board to replace the factory installed board.

Use the "find" (Ctrl + F) function in Adobe Acrobat to locate the product number of your product. If it appears on this list, then you will want to use the following MTH service parts to replace the factory installed electronics.



**AE10000353V**



**BF0000043**



**IC0000026**

**AE10000353V - PS 3/2 STACKER / O GAUGE / UNPROGRAMMED / CHYAO SHIUNN CONNECTORS / REPLACES ALL PS2-3V BOARDS**

When installing the PS 3/2 Stacker board you MUST replace the speaker with a new 4 Ohm Speaker

\*\* Be sure to use a 4 Ohm speaker that matches the size in your specific model.

**BF0000043 SPEAKER / 4 OHM 4W / 50mm DIAMETER x 18mm H / VECO 50AS04 OR XDEC 15ND18**

The factory installed heat sink will be difficult to reshape (to accommodate the Stacker board, so we also have a new "Stacker" specific heat sink that makes installation a breeze!

**IC0000026 HEAT SINK / PS 3 & PS 3/2 STACKER / ALUMINUM / KIT**

## Railking Steam & Diesel w/Protosound 2.0 - 3 Volt

### Railking Steam Locomotives

MTH Number	Road Name	Product	Catalog
30-1344-1	Long Island	0-6-0 B-6 Switcher Steam Engine w/Proto-Sound 2.0	2005 Volume 1
30-1345-1	Pennsylvania	0-6-0 B-6 Switcher Steam Engine w/Proto-Sound 2.0	2005 Volume 1
30-1346-1	Baltimore & Ohio	0-6-0 B-6 Switcher Steam Engine w/Proto-Sound 2.0	2005 Volume 1
30-1347-1	Pennsylvania-Reading Seashore	0-6-0 B-6 Switcher Steam Engine w/Proto-Sound 2.0	2005 Volume 1
30-1447-1	Baltimore & Ohio	0-6-0 Imperial B-6 Switcher Steam Engine w/Proto-Sound 2.0	2007 Volume 2
30-1448-1	Pennsylvania	0-6-0 Imperial B-6 Switcher Steam Engine w/Proto-Sound 2.0	2007 Volume 2
30-1449-1	Pennsylvania	0-6-0 Imperial B-6 Switcher Steam Engine w/Proto-Sound 2.0	2007 Volume 2
30-1450-1	Pennsylvania Reading Seashore Lines	0-6-0 Imperial B-6 Switcher Steam Engine w/Proto-Sound 2.0	2007 Volume 2
30-1378-1	Alaska	0-6-0 Imperial USRA Steam Switcher w/Proto-Sound 2.0	2006 Volume 1
30-1379-1	Jersey Central	0-6-0 Imperial USRA Steam Switcher w/Proto-Sound 2.0	2006 Volume 1
30-1380-1	Maryland & Pennsylvania	0-6-0 Imperial USRA Steam Switcher w/Proto-Sound 2.0	2006 Volume 1
30-1381-1	Pennsylvania	0-6-0 Imperial USRA Steam Switcher w/Proto-Sound 2.0	2006 Volume 1
30-1382-1	Santa Fe	0-6-0 Imperial USRA Steam Switcher w/Proto-Sound 2.0	2006 Volume 1
30-1383-1	South Buffalo Railway	0-6-0 Imperial USRA Steam Switcher w/Proto-Sound 2.0	2006 Volume 1
30-1384-1	Southern	0-6-0 Imperial USRA Steam Switcher w/Proto-Sound 2.0	2006 Volume 1
30-1385-1	Union Pacific	0-6-0 Imperial USRA Steam Switcher w/Proto-Sound 2.0	2006 Volume 1
30-1408-1	Bessemer & Lake Erie	0-6-0 Imperial USRA Steam Switcher w/Proto-Sound 2.0	2006 Volume 2
30-1409-1	Duluth, Missabe & Northern Railway	0-6-0 Imperial USRA Steam Switcher w/Proto-Sound 2.0	2006 Volume 2
30-1410-1	Great Northern	0-6-0 Imperial USRA Steam Switcher w/Proto-Sound 2.0	2006 Volume 2
30-1411-1	Norfolk & Western	0-6-0 Imperial USRA Steam Switcher w/Proto-Sound 2.0	2006 Volume 2
30-1498-1	New York Central	0-6-0 Imperial USRA Steam Switcher w/Proto-Sound 2.0	2008 Volume 2
30-1499-1	Pennsylvania	0-6-0 Imperial USRA Steam Switcher w/Proto-Sound 2.0	2008 Volume 2
30-1500-1	Southern	0-6-0 Imperial USRA Steam Switcher w/Proto-Sound 2.0	2008 Volume 2
30-1501-1	Union Pacific	0-6-0 Imperial USRA Steam Switcher w/Proto-Sound 2.0	2008 Volume 2
30-1491-1	Fluted	0-6-0 USRA Steam Switcher w/Proto-Sound 2.0	Uncataloged Items
30-1466-1	Illinois Central	0-8-0 Imperial Steam Engine w/Proto-Sound 2.0	2008 Volume 1
30-1467-1	Southern	0-8-0 Imperial Steam Engine w/Proto-Sound 2.0	2008 Volume 1
30-1468-1	New York Central	0-8-0 Imperial Steam Engine w/Proto-Sound 2.0	2008 Volume 1
30-1469-1	Nickel Plate Road	0-8-0 Imperial Steam Engine w/Proto-Sound 2.0	2008 Volume 1
30-1470-1	Northern Pacific	0-8-0 Imperial Steam Engine w/Proto-Sound 2.0	2008 Volume 1
30-1471-1	Pittsburgh & Lake Erie	0-8-0 Imperial Steam Engine w/Proto-Sound 2.0	2008 Volume 1
30-1310-1	Canadian Pacific	0-8-0 Steam Engine w/Proto-Sound 2.0	2004 Volume 1
30-1311-1	Florida East Coast	0-8-0 Steam Engine w/Proto-Sound 2.0	2004 Volume 1
30-1312-1	Great Northern	0-8-0 Steam Engine w/Proto-Sound 2.0	2004 Volume 1
30-1313-1	Pennsylvania	0-8-0 Steam Engine w/Proto-Sound 2.0	2004 Volume 1
30-1502-1	Pennsylvania	2-10-0 Imperial Decapod Steam Engine w/Proto-Sound 2.0	2008 Volume 2
30-1503-1	Pennsylvania	2-10-0 Imperial Decapod Steam Engine w/Proto-Sound 2.0	2008 Volume 2
30-1504-1	Chesapeake & Ohio	2-6-6-6 Imperial Allegheny Steam Engine - With Proto-Sound 2.0	2008 Volume 2
30-1505-1	Chesapeake & Ohio	2-6-6-6 Imperial Allegheny Steam Engine - With Proto-Sound 2.0	2008 Volume 2
30-1506-1	Great Northern	2-6-6-6 Imperial Allegheny Steam Engine - With Proto-Sound 2.0	2008 Volume 2
30-1507-1	Norfolk Western	2-6-6-6 Imperial Allegheny Steam Engine - With Proto-Sound 2.0	2008 Volume 2
30-4124-1	AB - Anheuser Busch	2-8-0 Steam Engine With Proto-Sound 2.0	Uncataloged Items
30-4127-1	NFL - Pittsburgh Steelers	2-8-0 Steam Engine With Proto-Sound 2.0	2005 RTR Catalog
30-4128-1	NFL - New England Patriots	2-8-0 Steam Engine With Proto-Sound 2.0	2005 RTR Catalog
30-4129-1	NFL - Philadelphia Eagles	2-8-0 Steam Engine With Proto-Sound 2.0	2005 RTR Catalog
30-4130-1	NFL - Green Bay Packers	2-8-0 Steam Engine With Proto-Sound 2.0	2005 RTR Catalog
30-4134-1	MLB - Boston Red SoxT	2-8-0 Steam Engine With Proto-Sound 2.0	2005 RTR Catalog

30-4136-1	Pennsylvania	2-8-0 Steam Engine With Proto-Sound 2.0	2005 RTR Catalog
30-4137-1	Pennsylvania	2-8-0 Steam Engine With Proto-Sound 2.0	2005 RTR Catalog
30-4138-1	Great Northern	2-8-0 Steam Engine With Proto-Sound 2.0	2005 RTR Catalog
30-4139-1	Chessie	2-8-0 Steam Engine With Proto-Sound 2.0	2005 RTR Catalog
30-4148-1	Ohio State	2-8-0 Steam Engine With Proto-Sound 2.0	2006 Volume 2
30-4149-1	Harley-Davidson	2-8-0 Steam Engine With Proto-Sound 2.0	2006 RTR Catalog
30-4150-1	Baltimore & Ohio	2-8-0 Steam Engine With Proto-Sound 2.0	2006 RTR Catalog
30-4151-1	NFL - New York Giants	2-8-0 Steam Engine With Proto-Sound 2.0	2006 RTR Catalog
30-4155-1	AB - Anheuser-Busch	2-8-0 Steam Engine With Proto-Sound 2.0	2006 RTR Catalog
30-4173-1	RUD - Rudolph The Red-Nosed Reindeer	2-8-0 Steam Engine With Proto-Sound 2.0	2006 RTR Catalog
30-4180-1	Caterpillar	2-8-0 Steam Engine With Proto-Sound 2.0	2007 RTR Catalog
30-4181-1	Harley-Davidson	2-8-0 Steam Engine With Proto-Sound 2.0	2007 RTR Catalog
30-4185-1	New York Central	2-8-0 Steam Engine With Proto-Sound 2.0	2007 RTR Catalog
30-4200-1	STL - Pittsburgh Steelers	2-8-0 Steam Engine With Proto-Sound 2.0	Uncataloged Items
30-4201-1	Christmas	2-8-0 Steam Engine With Proto-Sound 2.0	2009 RTR Catalog
30-4103-1	Pennsylvania	2-8-0 Steam Engine\With Proto-Sound 2.0	2004 RTR Catalog
30-4104-1	Pennsylvania	2-8-0 Steam Engine\With Proto-Sound 2.0	2004 RTR Catalog
30-4106-1	Pittsburgh & Lake Erie	2-8-0 Steam Engine\With Proto-Sound 2.0	2004 RTR Catalog
30-4119-1	Santa Fe	2-8-0 Steam Engine\With Proto-Sound 2.0	2004 RTR Catalog
30-1434-1	Chicago & North Western	2-8-4 Berkshire Steam Engine w/Proto-Sound 2.0	2007 Volume 1
30-1435-1	Nickel Plate Road	2-8-4 Berkshire Steam Engine w/Proto-Sound 2.0	2007 Volume 1
30-1436-1	Richmond Frederick & Potomac	2-8-4 Berkshire Steam Engine w/Proto-Sound 2.0	2007 Volume 1
30-1437-1	Santa Fe	2-8-4 Berkshire Steam Engine w/Proto-Sound 2.0	2007 Volume 1
30-1519-1	Nickel Plate Road	2-8-4 Berkshire Steam Engine w/Proto-Sound 2.0	2009 Volume 1
30-1520-1	Chesapeake & Ohio	2-8-4 Berkshire Steam Engine w/Proto-Sound 2.0	2009 Volume 1
30-1521-1	Richmond, Fredericksburg & Potomac	2-8-4 Berkshire Steam Engine w/Proto-Sound 2.0	2009 Volume 1
30-1522-1	Erie	2-8-4 Berkshire Steam Engine w/Proto-Sound 2.0	2009 Volume 1
30-1438-1	Norfolk & Western	2-8-8-2 Imperial Y6b Steam Engine w/Proto-Sound 2.0	2007 Volume 1
30-1546-1	Norfolk & Western	2-8-8-2 Imperial Y6b Steam Engine w/Proto-Sound 2.0	2010 Volume 2
30-1318-1	Lackawanna	2-8-8-2 USRA Steam Engine w/Proto-Sound 2.0	2004 Volume 1
30-1319-1	New York Central	2-8-8-2 USRA Steam Engine w/Proto-Sound 2.0	2004 Volume 1
30-1320-1	Pennsylvania	2-8-8-2 USRA Steam Engine w/Proto-Sound 2.0	2004 Volume 1
30-1321-1	Union Pacific	2-8-8-2 USRA Steam Engine w/Proto-Sound 2.0	2004 Volume 1
30-1322-1	Western Maryland	2-8-8-2 USRA Steam Engine w/Proto-Sound 2.0	2004 Volume 1
30-1368-1	Erie	2-8-8-8-2 Imperial Triplex Steam Engine w/Proto-Sound 2.0	2005 Volume 2
30-1369-1	Baltimore & Ohio	2-8-8-8-2 Imperial Triplex Steam Engine w/Proto-Sound 2.0	2005 Volume 2
30-1370-1	Great Northern	2-8-8-8-2 Imperial Triplex Steam Engine w/Proto-Sound 2.0	2005 Volume 2
30-1371-1	Virginian	2-8-8-8-2 Imperial Triplex Steam Engine w/Proto-Sound 2.0	2005 Volume 2
30-1528-1	Erie	2-8-8-8-2 Imperial Triplex Steam Engine w/Proto-Sound 2.0	2009 Volume 1
30-1529-1	Erie	2-8-8-8-2 Imperial Triplex Steam Engine w/Proto-Sound 2.0	2009 Volume 1
30-1530-1	Virginian	2-8-8-8-2 Imperial Triplex Steam Engine w/Proto-Sound 2.0	2009 Volume 1
30-1531-1	Erie	2-8-8-8-2 Imperial Triplex Steam Engine w/Proto-Sound 2.0	2009 Volume 1
30-1647-1	Erie	2-8-8-8-2 Imperial Triplex Steam Engine w/Proto-Sound 2.0	2009 Volume 1
30-1337-1	Erie	2-8-8-8-2 Triplex Steam Engine w/Proto-Sound 2.0	2004 Volume 1
30-2477-1	Chicago	3200 Series 2-Car Subway Set w/Proto-Sound 2.0	2005 Volume 1
30-2480-1	Chicago	3200 Series 2-Car Subway Set w/Proto-Sound 2.0	2005 Volume 1
30-2621-1	MLB - Chicago CubsT	3200 Series 2-Car Subway Set w/Proto-Sound 2.0	2005 Volume 2
30-26211-1	MLB - Chicago CubsT	3200 Series 2-Car Subway Set w/Proto-Sound 2.0	2007 Volume 2
30-2622-1	MLB - Chicago White SoxT	3200 Series 2-Car Subway Set w/Proto-Sound 2.0	2005 Volume 2
30-26221-1	MLB - Chicago White SoxT	3200 Series 2-Car Subway Set w/Proto-Sound 2.0	2005 Volume 2
30-2766-1	NFL - Chicago Bears	3200 Series 2-Car Subway Set w/Proto-Sound 2.0	2007 Volume 2
30-1341-1	Cleveland, Columbus & Cincinnati	4-4-0 General Steam Engine w/Proto-Sound 2.0	2004 Volume 2
30-1342-1	Pennsylvania	4-4-0 General Steam Engine w/Proto-Sound 2.0	2004 Volume 2

30-1343-1	NYC & Hudson River Railroad	4-4-0 General Steam Engine w/Proto-Sound 2.0	2004 Volume 2
30-1399-1	Jersey Central	4-6-0 Imperial Camelback Steam Engine w/Proto-Sound 2.0	2006 Volume 1
30-1400-1	Reading	4-6-0 Imperial Camelback Steam Engine w/Proto-Sound 2.0	2006 Volume 1
30-1401-1	Virginia Anthracite Coal	4-6-0 Imperial Camelback Steam Engine w/Proto-Sound 2.0	2006 Volume 1
30-1402-1	Lehigh & New England	4-6-0 Imperial Camelback Steam Engine w/Proto-Sound 2.0	2006 Volume 1
30-1407-1	MTHRRRC	4-6-0 Steam Engine w/ Proto-Sound 2.0	Uncataloged Items
30-4140-1	Virginia & Truckee	4-6-0 Steam Engine w/ Proto-Sound 2.0	2005 RTR Catalog
30-4141-1	Christmas	4-6-0 Steam Engine w/ Proto-Sound 2.0	2005 RTR Catalog
30-4156-1	Christmas	4-6-0 Steam Engine w/ Proto-Sound 2.0	2006 RTR Catalog
30-4157-1	Atchison, Topeka & Santa Fe	4-6-0 Steam Engine w/ Proto-Sound 2.0	2006 RTR Catalog
30-1372-1	Denver & Rio Grande	4-6-0 Ten Wheeler Steam Engine w/Proto-Sound 2.0	2005 Volume 2
30-1373-1	Pennsylvania	4-6-0 Ten Wheeler Steam Engine w/Proto-Sound 2.0	2005 Volume 2
30-1376-1	Denver & Rio Grande	4-6-0 Ten Wheeler Steam Engine w/Proto-Sound 2.0	2005 Volume 2
30-1425-1	Atchison, Topeka & Santa Fe	4-6-0 Ten Wheeler Steam Engine w/Proto-Sound 2.0	2006 Volume 2
30-1426-1	Virginia Truckee	4-6-0 Ten Wheeler Steam Engine w/Proto-Sound 2.0	2006 Volume 2
30-1537-1	Virginia & Truckee	4-6-0 Ten Wheeler Steam Engine w/Proto-Sound 2.0	2010 Volume 1
30-1538-1	Chesapeake & Ohio	4-6-0 Ten Wheeler Steam Engine w/Proto-Sound 2.0	2010 Volume 1
30-1539-1	Philadelphia & Reading	4-6-0 Ten Wheeler Steam Engine w/Proto-Sound 2.0	2010 Volume 1
30-1540-1	Norfolk & Western	4-6-0 Ten Wheeler Steam Engine w/Proto-Sound 2.0	2010 Volume 1
30-4192-1	Jersey Central	4-6-2 Bantam Pacific Steam Engine With Proto-Sound 2.0	2008 RTR Catalog
30-4193-1	Baltimore & Ohio	4-6-2 Bantam Pacific Steam Engine With Proto-Sound 2.0	2008 RTR Catalog
30-1386-1	Canadian National	4-6-2 Crusader Steam Engine w/Proto-Sound 2.0	2006 Volume 1
30-1387-1	Chicago & North Western	4-6-2 Crusader Steam Engine w/Proto-Sound 2.0	2006 Volume 1
30-1388-1	New Haven	4-6-2 Crusader Steam Engine w/Proto-Sound 2.0	2006 Volume 1
30-1389-1	Reading	4-6-2 Crusader Steam Engine w/Proto-Sound 2.0	2006 Volume 1
30-1439-1	Baltimore & Ohio	4-6-2 Forty-Niner Steam Engine w/Proto-Sound 2.0	2007 Volume 1
30-1440-1	Norfolk & Western	4-6-2 Forty-Niner Steam Engine w/Proto-Sound 2.0	2007 Volume 1
30-1440-1	Norfolk & Western	4-6-2 Forty-Niner Steam Engine w/Proto-Sound 2.0	Uncataloged Items
30-1441-1	Southern Pacific	4-6-2 Forty-Niner Steam Engine w/Proto-Sound 2.0	2007 Volume 1
30-1442-1	Union Pacific	4-6-2 Forty-Niner Steam Engine w/Proto-Sound 2.0	2007 Volume 1
30-1476-1	Pennsylvania	4-6-2 Imperial K-4s Pacific Steam Engine w/Proto-Sound 2.0	2008 Volume 1
30-1477-1	Pennsylvania	4-6-2 Imperial K-4s Pacific Steam Engine w/Proto-Sound 2.0	2008 Volume 1
30-1478-1	Pennsylvania	4-6-2 Imperial K-4s Pacific Steam Engine w/Proto-Sound 2.0	2008 Volume 1
30-1548-1	Pennsylvania	4-6-2 Imperial K-4s Pacific Steam Engine w/Proto-Sound 2.0	2010 Volume 2
30-1549-1	Pennsylvania	4-6-2 Imperial K-4s Pacific Steam Engine w/Proto-Sound 2.0	2010 Volume 2
30-1550-1	Pennsylvania	4-6-2 Imperial P47 Pacific Steam Engine w/Proto-Sound 2.0	2010 Volume 2
30-1551-1	Pennsylvania	4-6-2 Imperial P47 Pacific Steam Engine w/Proto-Sound 2.0	2010 Volume 2
30-1552-1	Jersey Central	4-6-2 Imperial P47 Pacific Steam Engine w/Proto-Sound 2.0	2010 Volume 2
30-1553-1	Jersey Central	4-6-2 Imperial P47 Pacific Steam Engine w/Proto-Sound 2.0	2010 Volume 2
30-1554-1	Southern	4-6-2 Imperial P47 Pacific Steam Engine w/Proto-Sound 2.0	2010 Volume 2
30-1555-1	Western Maryland	4-6-2 Imperial P47 Pacific Steam Engine w/Proto-Sound 2.0	2010 Volume 2
30-1352-1	Jersey Central	4-6-2 P47 Pacific Steam Engine w/Proto-Sound 2.0	2005 Volume 1
30-1353-1	Jersey Central	4-6-2 P47 Pacific Steam Engine w/Proto-Sound 2.0	2005 Volume 1
30-1354-1	Jersey Central	4-6-2 P47 Pacific Steam Engine w/Proto-Sound 2.0	2005 Volume 1
30-1355-1	Southern	4-6-2 Pacific Steam Engine w/Proto-Sound 2.0	2005 Volume 1
30-1356-1	Lackawanna	4-6-2 Pacific Steam Engine w/Proto-Sound 2.0	2005 Volume 1
30-1472-1	Baltimore & Ohio	4-6-2 Pacific Steam Engine w/Proto-Sound 2.0	2008 Volume 1
30-1473-1	John Deere	4-6-2 Pacific Steam Engine w/Proto-Sound 2.0	2008 Volume 1
30-1474-1	New York Central	4-6-2 Pacific Steam Engine w/Proto-Sound 2.0	2008 Volume 1
30-1475-1	Southern	4-6-2 Pacific Steam Engine w/Proto-Sound 2.0	2008 Volume 1
30-1403-1	Pennsylvania	4-6-2 Torpedo Steam Engine w/Proto-Sound 2.0	2006 Volume 1
30-1404-1	Pennsylvania	4-6-2 Torpedo Steam Engine w/Proto-Sound 2.0	2006 Volume 1
30-1405-1	Pennsylvania	4-6-2 Torpedo Steam Engine w/Proto-Sound 2.0	2006 Volume 1



30-1459-1	U.S. Army	4-6-4 Commodore Hudson Steam Engine w/ Proto-Sound 2.0	2007 Volume 2
30-1456-1	Circus	4-6-4 Commodore Hudson Steam Engine w/ Proto-Sound 2.0	2007 Volume 2
30-1457-1	New York Central	4-6-4 Commodore Hudson Steam Engine w/ Proto-Sound 2.0	2007 Volume 2
30-1458-1	Rexall	4-6-4 Commodore Hudson Steam Engine w/ Proto-Sound 2.0	2007 Volume 2
30-1348-1	Milwaukee Road	4-6-4 Hiawatha Hudson Steamer w/Proto-Sound 2.0	2005 Volume 1
30-1323-1	Boston & Albany	4-6-4 Hudson Steam Engine w/Proto-Sound 2.0	2004 Volume 1
30-1324-1	Chesapeake & Ohio	4-6-4 Hudson Steam Engine w/Proto-Sound 2.0	2004 Volume 1
30-1325-1	Milwaukee Road	4-6-4 Hudson Steam Engine w/Proto-Sound 2.0	2004 Volume 1
30-1326-1	New York Central	4-6-4 Hudson Steam Engine w/Proto-Sound 2.0	2004 Volume 1
30-1327-1	Northern Pacific	4-6-4 Hudson Steam Engine w/Proto-Sound 2.0	2004 Volume 1
30-1328-1	Seaboard	4-6-4 Hudson Steam Engine w/Proto-Sound 2.0	2004 Volume 1
30-1329-1	Southern Pacific	4-6-4 Hudson Steam Engine w/Proto-Sound 2.0	2004 Volume 1
30-1330-1	Union Pacific	4-6-4 Hudson Steam Engine w/Proto-Sound 2.0	2004 Volume 1
30-1358-1	Canadian Pacific	4-6-4 Hudson Steam Engine w/Proto-Sound 2.0	2005 Volume 2
30-1359-1	Chicago & Alton	4-6-4 Hudson Steam Engine w/Proto-Sound 2.0	2005 Volume 2
30-1360-1	Christmas	4-6-4 Hudson Steam Engine w/Proto-Sound 2.0	2005 Volume 2
30-1361-1	Santa Fe	4-6-4 Hudson Steam Engine w/Proto-Sound 2.0	2005 Volume 2
30-1362-1	New York Central	4-6-4 Hudson Steam Engine w/Proto-Sound 2.0	2005 Volume 2
30-1363-1	Southern	4-6-4 Hudson Steam Engine w/Proto-Sound 2.0	2005 Volume 2
30-1427-1	Canadian National	4-6-4 Hudson Steam Engine w/Proto-Sound 2.0	2006 Volume 2
30-1428-1	Erie	4-6-4 Hudson Steam Engine w/Proto-Sound 2.0	2006 Volume 2
30-1429-1	Michigan Central (NYC)	4-6-4 Hudson Steam Engine w/Proto-Sound 2.0	2006 Volume 2
30-1430-1	Western Maryland	4-6-4 Hudson Steam Engine w/Proto-Sound 2.0	2006 Volume 2
30-1460-1	Chessie	4-6-4 Hudson Steam Engine w/Proto-Sound 2.0	2007 Volume 2
30-1461-1	New York Central	4-6-4 Hudson Steam Engine w/Proto-Sound 2.0	2007 Volume 2
30-1462-1	New York Ontario & Western	4-6-4 Hudson Steam Engine w/Proto-Sound 2.0	2007 Volume 2
30-1463-1	Santa Fe	4-6-4 Hudson Steam Engine w/Proto-Sound 2.0	2007 Volume 2
30-1533-1	Santa Fe	4-6-4 Hudson Steam Engine w/Proto-Sound 2.0	2010 Volume 1
30-1534-1	New York Central	4-6-4 Hudson Steam Engine w/Proto-Sound 2.0	2010 Volume 1
30-1535-1	Southern	4-6-4 Hudson Steam Engine w/Proto-Sound 2.0	2010 Volume 1
30-1536-1	Chicago & North Western	4-6-4 Hudson Steam Engine w/Proto-Sound 2.0	2010 Volume 1
30-1443-1	New York Central	4-6-4 Imperial Dreyfuss Steam Engine w/Proto-Sound 2.0	2007 Volume 1
30-1490-1	New York Central	4-6-4 Imperial Empire State Express Steam Engine w/Proto-Sound 2.0	2008 Volume 1
30-1489-1	Milwaukee Road	4-6-4 Imperial Hiawatha Hudson Steamer w/Proto-Sound 2.0	20089 Volume 1
30-1444-1	Canadian Pacific	4-6-4 Imperial Royal Hudson Steam Engine w/Proto-Sound 2.0	2007 Volume 1
30-1515-1	Canadian Pacific	4-6-4 Imperial Royal Hudson Steam Engine w/Proto-Sound 2.0	2009 Volume 1
30-1516-1	Southern	4-6-4 Imperial Royal Hudson Steam Engine w/Proto-Sound 2.0	2009 Volume 1
30-1517-1	British Columbia	4-6-4 Imperial Royal Hudson Steam Engine w/Proto-Sound 2.0	2009 Volume 1
30-1518-1	Canadian Pacific	4-6-4 Imperial Royal Hudson Steam Engine w/Proto-Sound 2.0	2009 Volume 1
30-1486-1	Lehigh Valley	4-6-4 Imperial Streamlined Hudson Steamer w/Proto-Sound 2.0	2008 Volume 1
30-1487-1	Louisville & Nashville	4-6-4 Imperial Streamlined Hudson Steamer w/Proto-Sound 2.0	2008 Volume 1
30-1488-1	Santa Fe	4-6-4 Imperial Streamlined Hudson Steamer w/Proto-Sound 2.0	2008 Volume 1
30-1412-1	Chesapeake & Ohio	4-6-4 Streamlined Hudson Steam Engine w/Proto-Sound 2.0	2006 Volume 2
30-1413-1	Chicago, Burlington & Quincy	4-6-4 Streamlined Hudson Steam Engine w/Proto-Sound 2.0	2006 Volume 2
30-1414-1	Santa Fe	4-6-4 Streamlined Hudson Steam Engine w/Proto-Sound 2.0	2006 Volume 2
30-1415-1	Southern	4-6-4 Streamlined Hudson Steam Engine w/Proto-Sound 2.0	2006 Volume 2
30-1349-1	Burlington	4-6-4 Streamlined Hudson Steamer w/Proto-Sound 2.0	2005 Volume 1
30-1350-1	Lehigh Valley	4-6-4 Streamlined Hudson Steamer w/Proto-Sound 2.0	2005 Volume 1
30-1351-1	Seaboard	4-6-4 Streamlined Hudson Steamer w/Proto-Sound 2.0	2005 Volume 1
30-1508-1	Erie	4-6-4 Streamlined Hudson Steamer w/Proto-Sound 2.0	2008 Volume 2
30-1509-1	Grand Trunk Western	4-6-4 Streamlined Hudson Steamer w/Proto-Sound 2.0	2008 Volume 2
30-1510-1	Great Northern	4-6-4 Streamlined Hudson Steamer w/Proto-Sound 2.0	2008 Volume 2
30-1511-1	Wabash	4-6-4 Streamlined Hudson Steamer w/Proto-Sound 2.0	2008 Volume 2

30-1416-1	Clinchfield	4-6-6-4 Imperial Challenger Steam Engine w/Proto-Sound 2.0	2006 Volume 2
30-1417-1	Rio Grande	4-6-6-4 Imperial Challenger Steam Engine w/Proto-Sound 2.0	2006 Volume 2
30-1418-1	Union Pacific	4-6-6-4 Imperial Challenger Steam Engine w/Proto-Sound 2.0	2006 Volume 2
30-1419-1	Union Pacific	4-6-6-4 Imperial Challenger Steam Engine w/Proto-Sound 2.0	2006 Volume 2
30-1541-1	Union Pacific	4-6-6-4 Imperial Challenger Steam Engine w/Proto-Sound 2.0	2010 Volume 1
30-1542-1	Union Pacific	4-6-6-4 Imperial Challenger Steam Engine w/Proto-Sound 2.0	2010 Volume 1
30-1543-1	Clinchfield	4-6-6-4 Imperial Challenger Steam Engine w/Proto-Sound 2.0	2010 Volume 1
30-1544-1	Rio Grande	4-6-6-4 Imperial Challenger Steam Engine w/Proto-Sound 2.0	2010 Volume 1
30-1545-1	Western Maryland	4-6-6-4 Imperial Challenger Steam Engine w/Proto-Sound 2.0	2010 Volume 1
30-1391-1	Milwaukee Road	4-8-2 L-3 Mohawk Steam Engine w/Proto-Sound 2.0	2006 Volume 1
30-1392-1	New York Central	4-8-2 L-3 Mohawk Steam Engine w/Proto-Sound 2.0	2006 Volume 1
30-1393-1	New York Ontario & Western	4-8-2 L-3 Mohawk Steam Engine w/Proto-Sound 2.0	2006 Volume 1
30-1394-1	Pittsburgh & Lake Erie	4-8-2 L-3 Mohawk Steam Engine w/Proto-Sound 2.0	2006 Volume 1
30-1398-1	Grand Trunk	4-8-2 L-3 Mohawk Steam Engine w/Proto-Sound 2.0	2006 Volume 1
30-1492-1	Jersey Central	4-8-2 L-3 Mohawk Steam Engine w/Proto-Sound 2.0	2008 Volume 2
30-1493-1	New York Central	4-8-2 L-3 Mohawk Steam Engine w/Proto-Sound 2.0	2008 Volume 2
30-1494-1	Western Maryland	4-8-2 L-3 Mohawk Steam Engine w/Proto-Sound 2.0	2008 Volume 2
30-1495-1	Southern Pacific	4-8-2 L-3 Mohawk Steam Engine w/Proto-Sound 2.0	2008 Volume 2
30-1496-1	New York Central	4-8-2 L-3 Mohawk Steam Engine w/Proto-Sound 2.0	2008 Volume 2
30-1497-1	New York Central	4-8-2 L-3 Mohawk Steam Engine w/Proto-Sound 2.0	2008 Volume 2
30-1556-1	Chesapeake & Ohio	4-8-2 L-3 Mohawk Steam Engine w/Proto-Sound 2.0	2010 Volume 2
30-1557-1	Great Northern	4-8-2 L-3 Mohawk Steam Engine w/Proto-Sound 2.0	2010 Volume 2
30-1558-1	New York Central	4-8-2 L-3 Mohawk Steam Engine w/Proto-Sound 2.0	2010 Volume 2
30-1559-1	Southern	4-8-2 L-3 Mohawk Steam Engine w/Proto-Sound 2.0	2010 Volume 2
30-1366-1	Pennsylvania	4-8-2 M-1a Mountain Steam Engine w/Proto-Sound 2.0	2005 Volume 2
30-4183-1	Norfolk & Western	4-8-4 Bantam "J" Steam Engine With Proto-Sound 2.0	2007 RTR Catalog
30-4184-1	Norfolk & Western	4-8-4 Bantam "J" Steam Engine With Proto-Sound 2.0	2007 RTR Catalog
30-4182-1	Southern Pacific	4-8-4 Bantam GS-4 Steam Engine With Proto-Sound 2.0	2007 RTR Catalog
30-1375-1	Norfolk & Western	4-8-4 Imperial "J" Northern Steam Engine w/Proto-Sound 2.0	2005 Volume 2
30-1377-1	Norfolk & Western	4-8-4 Imperial "J" Northern Steam Engine w/Proto-Sound 2.0	2005 Volume 2
30-1479-1	Norfolk & Western	4-8-4 Imperial "J" Northern Steam Engine w/Proto-Sound 2.0	2008 Volume 1
30-1480-1	Norfolk & Western	4-8-4 Imperial "J" Northern Steam Engine w/Proto-Sound 2.0	2008 Volume 1
30-10014	Union Pacific	4-8-4 Imperial FEF Northern Steam Engine w/Proto-Sound 2.0	Uncataloged Items
30-1482-1	Union Pacific	4-8-4 Imperial FEF Northern Steam Engine w/Proto-Sound 2.0	2008 Volume 1
30-1483-1	Union Pacific	4-8-4 Imperial FEF Northern Steam Engine w/Proto-Sound 2.0	2008 Volume 1
30-1484-1	Union Pacific	4-8-4 Imperial FEF Northern Steam Engine w/Proto-Sound 2.0	2008 Volume 1
30-1485-1	Union Pacific	4-8-4 Imperial FEF Northern Steam Engine w/Proto-Sound 2.0	2008 Volume 1
30-1422-1	Southern Pacific	4-8-4 Imperial GS-2 Northern Steam Engine w/Proto-Sound 2.0	2006 Volume 2
30-1424-1	Western Pacific	4-8-4 Imperial GS-2 Northern Steam Engine w/Proto-Sound 2.0	2006 Volume 2
30-1420-1	American Freedom	4-8-4 Imperial GS-4 Northern Steam Engine w/Proto-Sound 2.0	2006 Volume 2
30-1421-1	BNSF	4-8-4 Imperial GS-4 Northern Steam Engine w/Proto-Sound 2.0	2006 Volume 2
30-1423-1	Southern Pacific	4-8-4 Imperial GS-4 Northern Steam Engine w/Proto-Sound 2.0	2006 Volume 2
30-1523-1	BNSF	4-8-4 Imperial GS-4 Northern Steam Engine w/Proto-Sound 2.0	2009 Volume 1
30-1524-1	Southern Pacific	4-8-4 Imperial GS-4 Northern Steam Engine w/Proto-Sound 2.0	2009 Volume 1
30-1525-1	Southern Pacific	4-8-4 Imperial GS-4 Northern Steam Engine w/Proto-Sound 2.0	2009 Volume 1
30-1526-1	Southern Pacific	4-8-4 Imperial GS-4 Northern Steam Engine w/Proto-Sound 2.0	2009 Volume 1
30-1527-1	American Freedom	4-8-4 Imperial GS-4 Northern Steam Engine w/Proto-Sound 2.0	2009 Volume 1
30-1465-1	Santa Fe	4-8-4 Imperial Northern Steam Engine w/Proto-Sound 2.0	2007 Volume 2
30-10002	Union Pacific	4-8-4 Northern Steam Engine w/Proto-Sound 2.0	Uncataloged Items
30-10003	Union Pacific	4-8-4 Northern Steam Engine w/Proto-Sound 2.0	Uncataloged Items
30-10004	Norfolk & Western	4-8-4 Northern Steam Engine w/Proto-Sound 2.0	Uncataloged Items
30-1464-1	Southern Pacific	4-8-8-2 Cab-Forward Steam Engine w/Proto-Sound 2.0	2007 Volume 2
30-1374-1	Union Pacific	4-8-8-4 Imperial Big Boy Steam Engine - With Proto-Sound 2.0	2005 Volume 2

30-1445-1	Union Pacific	4-8-8-4 Imperial Big Boy Steam Engine - With Proto-Sound 2.0	2007 Volume 1
30-1446-1	Union Pacific	4-8-8-4 Imperial Big Boy Steam Engine - With Proto-Sound 2.0	2007 Volume 1
30-1512-1	Union Pacific	4-8-8-4 Imperial Big Boy Steam Engine - With Proto-Sound 2.0	2008 Volume 2
30-1513-1	Union Pacific	4-8-8-4 Imperial Big Boy Steam Engine - With Proto-Sound 2.0	2008 Volume 2
30-1514-1	Union Pacific	4-8-8-4 Imperial Big Boy Steam Engine - With Proto-Sound 2.0	2008 Volume 2
30-2797-1	Metropolitan Transportation	5-Car R142A Series Subway Set w/Proto-Sound 2.0	2007 Volume 2
30-2673-1	Chicago	6200 Series 2-Car Subway Set w/Proto-Sound 2.0	2007 Volume 1
30-2755-1	Chicago Bicentennial	6200 Series 2-Car Subway Set w/Proto-Sound 2.0	2007 Volume 1
30-2888-1	CTA	6200 Series 2-Car Subway Set w/Proto-Sound 2.0	2009 Volume 1
30-2889-1	CTA	6200 Series 2-Car Subway Set w/Proto-Sound 2.0	2009 Volume 1
30-1395-1	Pennsylvania	6-8-6 Imperial S-2 Turbine Steam Engine w/Proto-Sound 2.0	2006 Volume 1
30-2376-1	Union Pacific	Aerotrain Diesel Engine Set w/Proto-Sound 2.0	2003 Volume 2
30-2674-1	Pennsylvania	Aerotrain Diesel Engine Set w/Proto-Sound 2.0	2003 Volume 2
30-2675-1	Rock Island	Aerotrain Diesel Engine Set w/Proto-Sound 2.0	2003 Volume 2
30-2954-1	Pennsylvania	Aerotrain Diesel Engine Set w/Proto-Sound 2.0	2009 Volume 2
30-2493-1	Denver & Rio Grande	Alco PA AA Diesel Set w/Proto-Sound 2.0	2005 Volume 2
30-2494-1	Santa Fe	Alco PA AA Diesel Set w/Proto-Sound 2.0	2005 Volume 2
30-2495-1	Missouri Pacific	Alco PA AA Diesel Set w/Proto-Sound 2.0	2005 Volume 2
30-2496-1	New Haven	Alco PA AA Diesel Set w/Proto-Sound 2.0	2005 Volume 2
30-2730-1	New York Central	Alco PA AA Diesel Set w/Proto-Sound 2.0	2007 Volume 1
30-2731-1	Pennsylvania	Alco PA AA Diesel Set w/Proto-Sound 2.0	2007 Volume 1
30-2732-1	Southern	Alco PA AA Diesel Set w/Proto-Sound 2.0	2007 Volume 1
30-2733-1	Union Pacific	Alco PA AA Diesel Set w/Proto-Sound 2.0	2007 Volume 1
30-2854-1	Delaware & Hudson	Alco PA AA Diesel Set w/Proto-Sound 2.0	2008 Volume 2
30-2855-1	MKT	Alco PA AA Diesel Set w/Proto-Sound 2.0	2008 Volume 2
30-2856-1	New Haven	Alco PA AA Diesel Set w/Proto-Sound 2.0	2008 Volume 2
30-2857-1	Santa Fe	Alco PA AA Diesel Set w/Proto-Sound 2.0	2008 Volume 2
30-2623-1	Akron, Canton & Youngstown	Alco Rs-1 Diesel Engine w/Proto-Sound 2.0	2005 Volume 2
30-2624-1	Baltimore & Ohio	Alco Rs-1 Diesel Engine w/Proto-Sound 2.0	2005 Volume 2
30-2625-1	Illinois Central Gulf	Alco Rs-1 Diesel Engine w/Proto-Sound 2.0	2005 Volume 2
30-2626-1	New York Central	Alco Rs-1 Diesel Engine w/Proto-Sound 2.0	2005 Volume 2
30-2627-1	Pennsylvania	Alco Rs-1 Diesel Engine w/Proto-Sound 2.0	2005 Volume 2
30-2734-1	Alaska	Alco Rs-1 Diesel Engine w/Proto-Sound 2.0	2007 Volume 1
30-2735-1	Chicago & North Western	Alco Rs-1 Diesel Engine w/Proto-Sound 2.0	2007 Volume 1
30-2736-1	Milwaukee Road	Alco Rs-1 Diesel Engine w/Proto-Sound 2.0	2007 Volume 1
30-2737-1	Santa Fe	Alco Rs-1 Diesel Engine w/Proto-Sound 2.0	2007 Volume 1
30-2800-1	Grand Trunk Western	Alco Rs-1 Diesel Engine w/Proto-Sound 2.0	2008 Volume 1
30-2801-1	New Haven	Alco Rs-1 Diesel Engine w/Proto-Sound 2.0	2008 Volume 1
30-2802-1	Santa Fe	Alco Rs-1 Diesel Engine w/Proto-Sound 2.0	2008 Volume 1
30-2803-1	SOO Line	Alco Rs-1 Diesel Engine w/Proto-Sound 2.0	2008 Volume 1
30-2984-1	Pennsylvania	Alco Rs-1 Diesel Engine w/Proto-Sound 2.0	2010 Volume 2
30-2985-1	Southern	Alco Rs-1 Diesel Engine w/Proto-Sound 2.0	2010 Volume 2
30-2986-1	New Haven	Alco Rs-1 Diesel Engine w/Proto-Sound 2.0	2010 Volume 2
30-2987-1	New York Central	Alco Rs-1 Diesel Engine w/Proto-Sound 2.0	2010 Volume 2
30-2378-1	Peabody	AS-616 Diesel Engine - With Proto-Sound 2.0	2003 Volume 2
30-2379-1	Pennsylvania	AS-616 Diesel Engine - With Proto-Sound 2.0	2003 Volume 2
30-2380-1	Union Pacific	AS-616 Diesel Engine - With Proto-Sound 2.0	2003 Volume 2
30-2381-1	Bessemer & Lake Erie	AS-616 Diesel Engine - With Proto-Sound 2.0	2003 Volume 2
30-2377-1	Chesapeake & Ohio	AS-616 Diesel Engine With Proto-Sound 2.0	2003 Volume 2
30-2767-1	Baltimore & Ohio	AS-616 Diesel Engine With Proto-Sound 2.0	2007 Volume 2
30-2768-1	MKT	AS-616 Diesel Engine With Proto-Sound 2.0	2007 Volume 2
30-2769-1	Southern Pacific	AS-616 Diesel Engine With Proto-Sound 2.0	2007 Volume 2
30-2770-1	Union Pacific	AS-616 Diesel Engine With Proto-Sound 2.0	2007 Volume 2

30-2771-1	US Pipe & Foundry	AS-616 Diesel Engine With Proto-Sound 2.0	2007 Volume 2
30-2772-1	Western Maryland	AS-616 Diesel Engine With Proto-Sound 2.0	2007 Volume 2
30-2566-1	Baltimore City	Brill Semi-Convertible Trolley w/Proto-Sound 2.0	2005 Volume 1
30-2567-1	Chicago	Brill Semi-Convertible Trolley w/Proto-Sound 2.0	2005 Volume 1
30-2568-1	Philadelphia	Brill Semi-Convertible Trolley w/Proto-Sound 2.0	2005 Volume 1
30-2569-1	WW II (Buy War Bonds) Trolley	Brill Semi-Convertible Trolley w/Proto-Sound 2.0	2005 Volume 1
30-5106-1	New York Transit	Brill Semi-Convertible Trolley w/Proto-Sound 2.0	2009 Volume 2
30-5107-1	Pittsburgh	Brill Semi-Convertible Trolley w/Proto-Sound 2.0	2009 Volume 2
30-5108-1	Philadelphia Suburban Transportation	Brill Semi-Convertible Trolley w/Proto-Sound 2.0	2009 Volume 2
30-5109-1	Municipal Transportation Authority	Brill Semi-Convertible Trolley w/Proto-Sound 2.0	2009 Volume 2
30-2419-1	Santa Fe	C30-7 Diesel Engine With Proto-Sound 2.0	2004 Volume 2
30-2420-1	BNSF	C30-7 Diesel Engine With Proto-Sound 2.0	2004 Volume 2
30-2421-1	Conrail	C30-7 Diesel Engine With Proto-Sound 2.0	2004 Volume 2
30-2422-1	CSX	C30-7 Diesel Engine With Proto-Sound 2.0	2004 Volume 2
30-2423-1	Livingston Rebuild Center	C30-7 Diesel Engine With Proto-Sound 2.0	2004 Volume 2
30-2655-1	Conrail	C628 Diesel Engine w/Proto-Sound 2.0	2006 Volume 1
30-2656-1	Lehigh Valley	C628 Diesel Engine w/Proto-Sound 2.0	2006 Volume 1
30-2657-1	Santa Fe	C628 Diesel Engine w/Proto-Sound 2.0	2006 Volume 1
30-2658-1	Union Pacific	C628 Diesel Engine w/Proto-Sound 2.0	2006 Volume 1
30-2858-1	Delaware & Hudson	C628 Diesel Engine w/Proto-Sound 2.0	2008 Volume 2
30-2859-1	Lehigh Valley	C628 Diesel Engine w/Proto-Sound 2.0	2008 Volume 2
30-2860-1	Norfolk & Western	C628 Diesel Engine w/Proto-Sound 2.0	2008 Volume 2
30-2861-1	Santa Fe	C628 Diesel Engine w/Proto-Sound 2.0	2008 Volume 2
30-2483-1	MTHRRRC	Dash-8 Diesel Engine - With Proto-sound2.0	Uncataloged Items
30-2484-1	Amtrak	Dash-8 Diesel Engine - With Proto-sound2.0	2005 Volume 2
30-2485-1	CSX	Dash-8 Diesel Engine - With Proto-sound2.0	2005 Volume 2
30-2486-1	Santa Fe	Dash-8 Diesel Engine - With Proto-sound2.0	2005 Volume 2
30-2487-1	Union Pacific	Dash-8 Diesel Engine - With Proto-sound2.0	2005 Volume 2
30-2707-1	Baltimore & Ohio	Doodlebug Diesel Engine w/Proto-sound2.0	2006 Volume 2
30-2708-1	Maryland & Pennsylvania	Doodlebug Diesel Engine w/Proto-sound2.0	2006 Volume 2
30-2709-1	Pennsylvania	Doodlebug Diesel Engine w/Proto-sound2.0	2006 Volume 2
30-2710-1	Santa Fe	Doodlebug Diesel Engine w/Proto-sound2.0	2006 Volume 2
30-2729-1	Ligonier Valley	Doodlebug Diesel w/Proto-sound2.0	Uncataloged Items
30-2488-1	Milwaukee Road	E-3 AA Diesel Engine Set w/Proto-Sound 2.0	2005 Volume 2
30-2489-1	Baltimore & Ohio	E-3 AA Diesel Engine Set w/Proto-Sound 2.0	2005 Volume 2
30-2490-1	Burlington	E-3 AA Diesel Engine Set w/Proto-Sound 2.0	2005 Volume 2
30-2491-1	Maine Central	E-3 AA Diesel Engine Set w/Proto-Sound 2.0	2005 Volume 2
30-2492-1	Circus	E-3 AA Diesel Engine Set w/Proto-Sound 2.0	2005 Volume 2
30-2967-1	Pennsylvania	E-3 AA Diesel Engine Set w/Proto-Sound 2.0	2010 Volume 1
30-2968-1	Santa Fe	E-3 AA Diesel Engine Set w/Proto-Sound 2.0	2010 Volume 1
30-2969-1	Great Northern	E-3 AA Diesel Engine Set w/Proto-Sound 2.0	2010 Volume 1
30-2970-1	Richmond, Fredericksburg & Potomac	E-3 AA Diesel Engine Set w/Proto-Sound 2.0	2010 Volume 1
30-2711-1	Boston & Maine	E-6 AA Diesel Engine Set w/Proto-Sound 2.0	2006 Volume 2
30-2712-1	Great Northern	E-6 AA Diesel Engine Set w/Proto-Sound 2.0	2006 Volume 2
30-2713-1	Rock Island	E-6 AA Diesel Engine Set w/Proto-Sound 2.0	2006 Volume 2
30-2714-1	Santa Fe	E-6 AA Diesel Engine Set w/Proto-Sound 2.0	2006 Volume 2
30-2832-1	Atlantic Coast Line	E-6 AA Diesel Engine Set w/Proto-Sound 2.0	2008 Volume 1
30-2833-1	Illinois Central	E-6 AA Diesel Engine Set w/Proto-Sound 2.0	2008 Volume 1
30-2834-1	New York Central	E-6 AA Diesel Engine Set w/Proto-Sound 2.0	2008 Volume 1
30-2835-1	Union Pacific	E-6 AA Diesel Engine Set w/Proto-Sound 2.0	2008 Volume 1
30-2950-1	Santa Fe	E-6 AA Diesel Engine Set w/Proto-Sound 2.0	2009 Volume 2
30-2951-1	Burlington	E-6 AA Diesel Engine Set w/Proto-Sound 2.0	2009 Volume 2
30-2952-1	Southern	E-6 AA Diesel Engine Set w/Proto-Sound 2.0	2009 Volume 2

30-2953-1	Missouri Pacific	E-6 AA Diesel Engine Set w/Proto-Sound 2.0	2009 Volume 2
30-2676-1	Erie	E-8 AA Diesel Engine Set w/Proto-sound2.0	2006 Volume 1
30-2677-1	Illinois Central	E-8 AA Diesel Engine Set w/Proto-sound2.0	2006 Volume 1
30-2678-1	New York Central	E-8 AA Diesel Engine Set w/Proto-sound2.0	2006 Volume 1
30-2679-1	Southern Pacific	E-8 AA Diesel Engine Set w/Proto-sound2.0	2006 Volume 1
30-2836-1	Ontario Northland	E-8 AA Diesel Engine Set w/Proto-sound2.0	2008 Volume 1
30-2837-1	Pennsylvania	E-8 AA Diesel Engine Set w/Proto-sound2.0	2008 Volume 1
30-2838-1	Santa Fe	E-8 AA Diesel Engine Set w/Proto-sound2.0	2008 Volume 1
30-2839-1	Southern	E-8 AA Diesel Engine Set w/Proto-sound2.0	2008 Volume 1
30-2911-1	Pennsylvania	E-8 AA Diesel Engine Set w/Proto-sound2.0	2009 Volume 1
30-2912-1	Union Pacific	E-8 AA Diesel Engine Set w/Proto-sound2.0	2009 Volume 1
30-2913-1	Kansas City Southern	E-8 AA Diesel Engine Set w/Proto-sound2.0	2009 Volume 1
30-2914-1	Canadian Pacific	E-8 AA Diesel Engine Set w/Proto-sound2.0	2009 Volume 1
30-2996-1	Amtrak	E-8 AA Diesel Engine Set w/Proto-sound2.0	2010 Volume 2
30-2997-1	Burlington Northern	E-8 AA Diesel Engine Set w/Proto-sound2.0	2010 Volume 2
30-2998-1	Chesapeake & Ohio	E-8 AA Diesel Engine Set w/Proto-sound2.0	2010 Volume 2
30-2999-1	New York Central	E-8 AA Diesel Engine Set w/Proto-sound2.0	2010 Volume 2
30-5111-1	Great Northern	EP-5 Electric Engine With Proto-Sound 2.0	2010 Volume 1
30-5112-1	MARS - M&Ms	EP-5 Electric Engine With Proto-Sound 2.0	2010 Volume 1
30-5113-1	New Haven	EP-5 Electric Engine With Proto-Sound 2.0	2010 Volume 1
30-5114-1	Milwaukee Road	EP-5 Electric Engine With Proto-Sound 2.0	2010 Volume 1
30-20034-1	CSX	F-3 ABA Diesel Engine Set w/Proto-Sound 2.0	2011 Volume 1
30-20035-1	Jersey Central	F-3 ABA Diesel Engine Set w/Proto-Sound 2.0	2011 Volume 1
30-20036-1	Kansas City Southern	F-3 ABA Diesel Engine Set w/Proto-Sound 2.0	2011 Volume 1
30-2468-1	Denver & Rio Grande	F-3 ABA Diesel Engine Set w/Proto-Sound 2.0	2005 Volume 1
30-2469-1	New Haven	F-3 ABA Diesel Engine Set w/Proto-Sound 2.0	2005 Volume 1
30-2470-1	Southern	F-3 ABA Diesel Engine Set w/Proto-Sound 2.0	2005 Volume 1
30-2471-1	Santa Fe	F-3 ABA Diesel Engine Set w/Proto-Sound 2.0	2005 Volume 1
30-2628-1	Canadian Pacific	F-3 ABA Diesel Engine Set w/Proto-Sound 2.0	2005 Volume 2
30-2629-1	Gulf, Mobile & Ohio	F-3 ABA Diesel Engine Set w/Proto-Sound 2.0	2005 Volume 2
30-2630-1	MTH 25th Anniversary	F-3 ABA Diesel Engine Set w/Proto-Sound 2.0	2005 Volume 2
30-2631-1	New York Central	F-3 ABA Diesel Engine Set w/Proto-Sound 2.0	2005 Volume 2
30-2715-1	Alaska	F-3 ABA Diesel Engine Set w/Proto-Sound 2.0	2006 Volume 2
30-2716-1	Chessie	F-3 ABA Diesel Engine Set w/Proto-Sound 2.0	2006 Volume 2
30-2717-1	Grand Trunk Western	F-3 ABA Diesel Engine Set w/Proto-Sound 2.0	2006 Volume 2
30-2718-1	Reading	F-3 ABA Diesel Engine Set w/Proto-Sound 2.0	2006 Volume 2
30-2773-1	Canadian National	F-3 ABA Diesel Engine Set w/Proto-Sound 2.0	2007 Volume 2
30-2774-1	Erie	F-3 ABA Diesel Engine Set w/Proto-Sound 2.0	2007 Volume 2
30-2775-1	Illinois Central	F-3 ABA Diesel Engine Set w/Proto-Sound 2.0	2007 Volume 2
30-2776-1	Western Pacific	F-3 ABA Diesel Engine Set w/Proto-Sound 2.0	2007 Volume 2
30-2849-1	Caterpillar	F-3 ABA Diesel Engine Set w/Proto-Sound 2.0	2008 Volume 2
30-2850-1	Pennsylvania	F-3 ABA Diesel Engine Set w/Proto-Sound 2.0	2008 Volume 2
30-2851-1	Chesapeake & Ohio	F-3 ABA Diesel Engine Set w/Proto-Sound 2.0	2008 Volume 2
30-2852-1	Great Northern	F-3 ABA Diesel Engine Set w/Proto-Sound 2.0	2008 Volume 2
30-2853-1	Harley-Davidson	F-3 ABA Diesel Engine Set w/Proto-Sound 2.0	2008 Volume 2
30-2942-1	Baltimore & Ohio	F-3 ABA Diesel Engine Set w/Proto-Sound 2.0	2009 Volume 2
30-2943-1	Milwaukee Road	F-3 ABA Diesel Engine Set w/Proto-Sound 2.0	2009 Volume 2
30-2944-1	Wabash	F-3 ABA Diesel Engine Set w/Proto-Sound 2.0	2009 Volume 2
30-2945-1	Western Pacific	F-3 ABA Diesel Engine Set w/Proto-Sound 2.0	2009 Volume 2
30-2992-1	Boston & Maine	F-3 ABA Diesel Engine Set w/Proto-Sound 2.0	2010 Volume 2
30-2993-1	Norfolk Southern	F-3 ABA Diesel Engine Set w/Proto-Sound 2.0	2010 Volume 2
30-2994-1	Southern Pacific	F-3 ABA Diesel Engine Set w/Proto-Sound 2.0	2010 Volume 2
30-2995-1	Western Maryland	F-3 ABA Diesel Engine Set w/Proto-Sound 2.0	2010 Volume 2

30-4108-1	Union Pacific	F-3 R-T-R Passenger Train Set w/Proto-Sound 2.0	2004 RTR Catalog
30-4109-1	Baltimore & Ohio	F-3 R-T-R Passenger Train Set w/Proto-Sound 2.0	2004 RTR Catalog
30-4110-1	Texas Special	F-3 R-T-R Passenger Train Set w/Proto-Sound 2.0	2004 RTR Catalog
30-4111-1	New Haven	F-3 R-T-R Passenger Train Set w/Proto-Sound 2.0	2004 RTR Catalog
30-4112-1	Union Pacific	F-3 R-T-R Passenger Train Set w/Proto-Sound 2.0	2004 RTR Catalog
30-4113-1	Baltimore & Ohio	F-3 R-T-R Passenger Train Set w/Proto-Sound 2.0	2004 RTR Catalog
30-4114-1	Texas Special	F-3 R-T-R Passenger Train Set w/Proto-Sound 2.0	2004 RTR Catalog
30-4115-1	New Haven	F-3 R-T-R Passenger Train Set w/Proto-Sound 2.0	2004 RTR Catalog
30-4116-1	Caterpillar	F-3 R-T-R Passenger Train Set w/Proto-Sound 2.0	2004 RTR Catalog
30-4120-1	Harley-Davidson	F-3 R-T-R Passenger Train Set w/Proto-Sound 2.0	2004 Volume 2
30-4121-1	MLB - New York YankeesT	F-3 R-T-R Passenger Train Set w/Proto-Sound 2.0	2004 Volume 2
30-4142-1	Santa Fe	F-3 R-T-R Passenger Train Set w/Proto-Sound 2.0	2005 RTR Catalog
30-4186-1	Santa Fe	F-3 R-T-R Passenger Train Set w/Proto-Sound 2.0	2007 RTR Catalog
30-4187-1	Santa Fe	F-3 R-T-R Passenger Train Set w/Proto-Sound 2.0	2007 RTR Catalog
30-4190-1	MARS - M&M'Sr	F-3 R-T-R Passenger Train Set w/Proto-Sound 2.0	2011 RTR Catalog
30-4196-1	Burlington	F-3 R-T-R Passenger Train Set w/Proto-Sound 2.0	2008 RTR Catalog
30-4204-1	Amtrak	F40PH Diesel Engine w/Proto-Sound 2.0	2010 RTR Catalog
30-4198-1	Amtrak	F59PH Diesel Engine - With Proto-Sound 2.0	2008 rtr
30-2862-1	Amtrak	F59PHI Imperial Diesel Engine w/Proto-Sound 2.0	2008 Volume 2
30-2863-1	Amtrak	F59PHI Imperial Diesel Engine w/Proto-Sound 2.0	2008 Volume 2
30-2864-1	Metrolink	F59PHI Imperial Diesel Engine w/Proto-Sound 2.0	2008 Volume 2
30-2865-1	Sounder	F59PHI Imperial Diesel Engine w/Proto-Sound 2.0	2008 Volume 2
30-2472-1	Canadian Pacific	FA-2 AA Diesel Set w/Proto-Sound 2.0	2005 Volume 1
30-2473-1	Great Northern	FA-2 AA Diesel Set w/Proto-Sound 2.0	2005 Volume 1
30-2474-1	Pennsylvania	FA-2 AA Diesel Set w/Proto-Sound 2.0	2005 Volume 1
30-2475-1	Western Maryland	FA-2 AA Diesel Set w/Proto-Sound 2.0	2005 Volume 1
30-2476-1	Southern Pacific	FA-2 AA Diesel Set w/Proto-Sound 2.0	2005 Volume 1
30-2344-1	Apache Railway	FM H10-44 Diesel Engine - With Proto-Sound 2.0	2003 Volume 1
30-2345-1	Union Pacific	FM H10-44 Diesel Engine - With Proto-Sound 2.0	2003 Volume 1
30-2346-1	Minneapolis, Northfield & Southern	FM H10-44 Diesel Engine - With Proto-Sound 2.0	2003 Volume 1
30-2347-1	Pittsburgh & West Virginia	FM H10-44 Diesel Engine - With Proto-Sound 2.0	2003 Volume 1
30-2348-1	Santa Fe	FM H10-44 Diesel Engine - With Proto-Sound 2.0	2003 Volume 1
30-2349-1	Chicago & North Western	FM H10-44 Diesel Engine - With Proto-Sound 2.0	2003 Volume 1
30-2457-1	Susquehanna	FP45 Diesel Engine - With Proto-Sound 2.0	2005 Volume 1
30-2458-1	Wisconsin Central	FP45 Diesel Engine - With Proto-Sound 2.0	2005 Volume 1
30-2459-1	Great Northern	FP45 Diesel Engine - With Proto-Sound 2.0	2005 Volume 1
30-2460-1	Santa Fe	FP45 Diesel Engine - With Proto-Sound 2.0	2005 Volume 1
30-2907-1	Maersk	FP45 Diesel Engine - With Proto-Sound 2.0	2009 Volume 1
30-2908-1	Montana Rail Link	FP45 Diesel Engine - With Proto-Sound 2.0	2009 Volume 1
30-2909-1	Santa Fe	FP45 Diesel Engine - With Proto-Sound 2.0	2009 Volume 1
30-2910-1	Milwaukee Road	FP45 Diesel Engine - With Proto-Sound 2.0	2009 Volume 1
30-2785-1	Maryland & Pennsylvania	Galloping Goose Diesel With Proto-Sound 2.0	2007 Volume 2
30-2786-1	Railway Express	Galloping Goose Diesel With Proto-Sound 2.0	2007 Volume 2
30-2787-1	Rio Grande Southern	Galloping Goose Diesel With Proto-Sound 2.0	2007 Volume 2
30-2788-1	Virginia & Truckee	Galloping Goose Diesel With Proto-Sound 2.0	2007 Volume 2
30-2798-1	Rio Grande Southern (2007 TCA Conve	Galloping Goose Diesel With Proto-Sound 2.0	Uncataloged Items
30-2890-1	Rio Grande Southern	Galloping Goose Diesel With Proto-Sound 2.0	Uncataloged Items
30-2890-1	Rio Grande Southern	Galloping Goose Diesel With Proto-Sound 2.0	Uncataloged Items
30-20037-1	Union Pacific	Gas Turbine Engine - With Proto-Sound 2.0	2011 Volume 1
30-2382-1	Union Pacific	Gas Turbine Engine - With Proto-Sound 2.0	2003 Volume 2
30-2416-1	Amtrak	Genesis Diesel Engine - With Proto-Sound 2.0	2004 Volume 2
30-2632-1	Amtrak	Genesis Diesel Engine - With Proto-Sound 2.0	2005 Volume 2
30-2633-1	MTA	Genesis Diesel Engine - With Proto-Sound 2.0	2005 Volume 2

30-2634-1	New Haven	Genesis Diesel Engine - With Proto-Sound 2.0	2005 Volume 2
30-2635-1	VIA Rail Canada	Genesis Diesel Engine - With Proto-Sound 2.0	2005 Volume 2
30-2587-1	Pennsylvania	GG-1 Electric Engine w/Proto-Sound 2.0	2007 Volume 1
30-2588-1	Pennsylvania	GG-1 Electric Engine w/Proto-Sound 2.0	2007 Volume 1
30-2589-1	Pennsylvania	GG-1 Electric Engine w/Proto-Sound 2.0	2007 Volume 1
30-2590-1	Pennsylvania	GG-1 Electric Engine w/Proto-Sound 2.0	2007 Volume 1
30-2591-1	Pennsylvania	GG-1 Electric Engine w/Proto-Sound 2.0	Uncataloged Items
30-2592-1	Pennsylvania	GG-1 Electric Engine w/Proto-Sound 2.0	2007 Volume 1
30-2405-1	Burlington	GP-20 Diesel Engine With Proto-Sound 2.0	2004 Volume 1
30-2406-1	Conrail	GP-20 Diesel Engine With Proto-Sound 2.0	2004 Volume 1
30-2407-1	Southern Pacific	GP-20 Diesel Engine With Proto-Sound 2.0	2004 Volume 1
30-2408-1	Western Pacific	GP-20 Diesel Engine With Proto-Sound 2.0	2004 Volume 1
30-2413-1	MTHRRRC - 2004	GP-20 Diesel Engine With Proto-Sound 2.0	Uncataloged Items
30-2684-1	New York Central	GP-20 Diesel Engine With Proto-Sound 2.0	2006 Volume 1
30-2685-1	Santa Fe	GP-20 Diesel Engine With Proto-Sound 2.0	2006 Volume 1
30-2686-1	Twin Cities & Western	GP-20 Diesel Engine With Proto-Sound 2.0	2006 Volume 1
30-2687-1	Union Pacific	GP-20 Diesel Engine With Proto-Sound 2.0	2006 Volume 1
30-2777-1	BNSF	GP-20 Diesel Engine With Proto-Sound 2.0	2007 Volume 2
30-2778-1	Burlington Northern	GP-20 Diesel Engine With Proto-Sound 2.0	2007 Volume 2
30-2779-1	Milwaukee Road	GP-20 Diesel Engine With Proto-Sound 2.0	2007 Volume 2
30-2780-1	Santa Fe	GP-20 Diesel Engine With Proto-Sound 2.0	2007 Volume 2
30-2799-1	PBC - Iron City	GP-20 Diesel Engine With Proto-Sound 2.0	Uncataloged Items
30-2973-1	Maryland Midland	GP-20 Diesel Engine With Proto-Sound 2.0	2010 Volume 1
30-2974-1	Central New England	GP-20 Diesel Engine With Proto-Sound 2.0	2010 Volume 1
30-2975-1	Wisconsin & Southern	GP-20 Diesel Engine With Proto-Sound 2.0	2010 Volume 1
30-2976-1	Norfolk Southern	GP-20 Diesel Engine With Proto-Sound 2.0	2010 Volume 1
30-2977-1	Alaska	GP-20 Diesel Engine With Proto-Sound 2.0	2010 Volume 1
30-20044-1	Latrobe Area Chamber of Commerce	GP-7 Diesel Engine w/Proto-Sound 2.0	Uncataloged Items
30-2414-1	Pittsburgh & Lake Erie	GP-7 Diesel Engine w/Proto-Sound 2.0	Uncataloged Items
30-2891-1	Great Northern	GP-7 Diesel Engine w/Proto-Sound 2.0	2009 Volume 1
30-2892-1	Louisville & Nashville	GP-7 Diesel Engine w/Proto-Sound 2.0	2009 Volume 1
30-2978-1	Boston & Maine	GP-7 Diesel Engine w/Proto-Sound 2.0	2010 Volume 2
30-2603-1	Richmond, Fredericksburg & Potomac	GP-7 Diesel Engine w/Proto-sound2.0	2005 Volume 2
30-2636-1	Western Maryland	GP-7 Diesel Engine w/Proto-sound2.0	2005 Volume 2
30-2719-1	Chicago, Burlington & Quincy	GP-7 Diesel Engine w/Proto-sound2.0	2006 Volume 2
30-2720-1	Guilford Rail System	GP-7 Diesel Engine w/Proto-sound2.0	2006 Volume 2
30-2721-1	MKT	GP-7 Diesel Engine w/Proto-sound2.0	2006 Volume 2
30-2722-1	New York Central	GP-7 Diesel Engine w/Proto-sound2.0	2006 Volume 2
30-2688-1	Atlantic Coast Line	GP-9 Diesel Engine w/Proto-Sound 2.0	2006 Volume 1
30-2689-1	Norfolk & Western	GP-9 Diesel Engine w/Proto-Sound 2.0	2006 Volume 1
30-2690-1	Canadian Pacific	GP-9 Diesel Engine w/Proto-Sound 2.0	2006 Volume 1
30-2691-1	Western Pacific	GP-9 Diesel Engine w/Proto-Sound 2.0	2006 Volume 1
30-2698-1	Erie	GP-9 Diesel Engine w/Proto-Sound 2.0	2006 Volume 1
30-2699-1	Jersey Central	GP-9 Diesel Engine w/Proto-Sound 2.0	2006 Volume 1
30-2738-1	Grand Trunk Western	GP-9 Diesel Engine w/Proto-Sound 2.0	2007 Volume 1
30-2739-1	Maryland & Pennsylvania	GP-9 Diesel Engine w/Proto-Sound 2.0	2007 Volume 1
30-2740-1	Pittsburgh & Lake Erie	GP-9 Diesel Engine w/Proto-Sound 2.0	2007 Volume 1
30-2741-1	Western Maryland	GP-9 Diesel Engine w/Proto-Sound 2.0	2007 Volume 1
30-2808-1	Central Vermont/U.S. Coast Guard	GP-9 Diesel Engine w/Proto-Sound 2.0	2008 Volume 1
30-2809-1	Florida East Coast	GP-9 Diesel Engine w/Proto-Sound 2.0	2008 Volume 1
30-2810-1	Pennsylvania	GP-9 Diesel Engine w/Proto-Sound 2.0	2008 Volume 1
30-2811-1	Southern Pacific	GP-9 Diesel Engine w/Proto-Sound 2.0	2008 Volume 1
30-2893-1	Buffalo & Pittsburgh	GP-9 Diesel Engine w/Proto-Sound 2.0	2009 Volume 1

30-2894-1	Canadian National	GP-9 Diesel Engine w/Proto-Sound 2.0	2009 Volume 1
30-2920-1	AB - Budweiser	GP-9 Diesel Engine w/Proto-Sound 2.0	2009 Volume 1
30-2979-1	Southern	GP-9 Diesel Engine w/Proto-Sound 2.0	2010 Volume 2
30-2980-1	Pennsylvania	GP-9 Diesel Engine w/Proto-Sound 2.0	2010 Volume 2
30-2981-1	Union Pacific	GP-9 Diesel Engine w/Proto-Sound 2.0	2010 Volume 2
30-2982-1	Toronto Hamilton & Buffalo	GP-9 Diesel Engine w/Proto-Sound 2.0	2010 Volume 2
30-2983-1	BNSF	GP-9 Diesel Engine w/Proto-Sound 2.0	2010 Volume 2
30-2424-1	Baltimore & Ohio	GP-9 Diesel Engine w/Proto-sound2.0	2004 Volume 2
30-2425-1	Reading	GP-9 Diesel Engine w/Proto-sound2.0	2004 Volume 2
30-2426-1	Christmas	GP-9 Diesel Engine w/Proto-sound2.0	2004 Volume 2
30-2427-1	Electro Motive Division	GP-9 Diesel Engine w/Proto-sound2.0	2004 Volume 2
30-2428-1	Illinois Central	GP-9 Diesel Engine w/Proto-sound2.0	2004 Volume 2
30-2429-1	Lehigh Valley	GP-9 Diesel Engine w/Proto-sound2.0	2004 Volume 2
30-2430-1	New Haven	GP-9 Diesel Engine w/Proto-sound2.0	2004 Volume 2
30-2431-1	Norfolk & Western	GP-9 Diesel Engine w/Proto-sound2.0	2004 Volume 2
30-2432-1	U.S. Army	GP-9 Diesel Engine w/Proto-sound2.0	2004 Volume 2
30-2600-1	Chessie	GP-9 Diesel Engine w/Proto-sound2.0	2005 Volume 2
30-2601-1	Pennsylvania	GP-9 Diesel Engine w/Proto-sound2.0	2005 Volume 2
30-2602-1	Alaska	GP-9 Diesel Engine w/Proto-sound2.0	2005 Volume 2
30-2604-1	Providence & Worcester	GP-9 Diesel Engine w/Proto-sound2.0	2005 Volume 2
30-2637-1	Clinchfield	GP-9 Diesel Engine w/Proto-sound2.0	2005 Volume 2
30-2638-1	Missouri Pacific	GP-9 Diesel Engine w/Proto-sound2.0	2005 Volume 2
30-2809-1	Florida East Coast	GP-9 Diesel Engine w/Proto-sound2.0	Uncataloged Items
30-2447-1	Metropolitan	LO-V 4-Car Subway Set with Proto-Sound 2.0	2005 Volume 1
30-2448-1	Metropolitan	LO-V 4-Car Subway Set with Proto-Sound 2.0	2005 Volume 1
30-2756-1	Metropolitan Two-Tone Green	LO-V 4-Car Subway Set with Proto-Sound 2.0	2007 Volume 1
30-2757-1	Metropolitan	LO-V 4-Car Subway Set with Proto-Sound 2.0	2007 Volume 1
30-2758-1	Metropolitan Work Train	LO-V 4-Car Subway Set with Proto-Sound 2.0	2007 Volume 1
30-2756-1	Metropolitan Transit	Lo-V 4-Car Subway Special #1	Uncataloged Items
30-2758-1	Metropolitan Transit	Lo-V 4-Car Subway Special #2	Uncataloged Items
30-2812-1	Canadian Pacific	MP15AC Diesel Engine w/Proto-sound2.0	2008 Volume 1
30-2813-1	CSX	MP15AC Diesel Engine w/Proto-sound2.0	2008 Volume 1
30-2814-1	Milwaukee Road	MP15AC Diesel Engine w/Proto-sound2.0	2008 Volume 1
30-2815-1	Union Pacific	MP15AC Diesel Engine w/Proto-sound2.0	2008 Volume 1
30-2938-1	Amtrak	MP15DCDiesel Engine w/Proto-sound2.0	2009 Volume 2
30-2939-1	Norfolk Southern	MP15DCDiesel Engine w/Proto-sound2.0	2009 Volume 2
30-2940-1	Genesee & Wyoming	MP15DCDiesel Engine w/Proto-sound2.0	2009 Volume 2
30-2941-1	BNSF	MP15DCDiesel Engine w/Proto-sound2.0	2009 Volume 2
30-2667-1	Rio Grande	NW-2 Switcher Diesel Engine w/Proto-sound2.0	2006 Volume 1
30-2668-1	Pennsylvania	NW-2 Switcher Diesel Engine w/Proto-sound2.0	2006 Volume 1
30-2669-1	Seaboard	NW-2 Switcher Diesel Engine w/Proto-sound2.0	2006 Volume 1
30-2670-1	Harley-Davidson	NW-2 Switcher Diesel Engine w/Proto-sound2.0	2006 Volume 1
30-2700-1	Monon	NW-2 Switcher Diesel Engine w/Proto-sound2.0	2006 Volume 1
30-2959-1	Clinchfield	NW-2 Switcher Diesel Engine w/Proto-sound2.0	2010 Volume 1
30-2960-1	New York Ontario & Western	NW-2 Switcher Diesel Engine w/Proto-sound2.0	2010 Volume 1
30-2961-1	Northern Pacific	NW-2 Switcher Diesel Engine w/Proto-sound2.0	2010 Volume 1
30-2962-1	CSX	NW-2 Switcher Diesel Engine w/Proto-sound2.0	2010 Volume 1
30-2558-1	Boston	PCC Electric Street Car w/Proto-Sound 2.0	2004 Volume 2
30-2559-1	Newark	PCC Electric Street Car w/Proto-Sound 2.0	2004 Volume 2
30-2560-1	San Francisco	PCC Electric Street Car w/Proto-Sound 2.0	2004 Volume 2
30-2570-1	Brooklyn	PCC Electric Street Car w/Proto-Sound 2.0	2005 Volume 2
30-2571-1	Cincinnati	PCC Electric Street Car w/Proto-Sound 2.0	2005 Volume 2
30-2572-1	Detroit	PCC Electric Street Car w/Proto-Sound 2.0	2005 Volume 2



30-2583-1	Toronto	PCC Electric Street Car w/Proto-Sound 2.0	2005 Volume 2
30-2584-1	Pittsburgh	PCC Electric Street Car w/Proto-Sound 2.0	Uncataloged Items
30-2586-1	NFL - Pittsburgh Steelers	PCC Electric Street Car w/Proto-Sound 2.0	Uncataloged Items
30-2593-1	Boston	PCC Electric Street Car w/Proto-Sound 2.0	2007 Volume 2
30-2594-1	Cleveland	PCC Electric Street Car w/Proto-Sound 2.0	2007 Volume 2
30-2595-1	Washington	PCC Electric Street Car w/Proto-Sound 2.0	2007 Volume 2
30-5119-1	Septa	PCC Electric Street Car w/Proto-Sound 2.0	2011 Volume 1
30-5120-1	Boston	PCC Electric Street Car w/Proto-Sound 2.0	2011 Volume 1
30-5121-1	Port Authority of Allegheny County	PCC Electric Street Car w/Proto-Sound 2.0	2011 Volume 1
30-5122-1	Baltimore Transit	PCC Electric Street Car w/Proto-Sound 2.0	2011 Volume 1
30-2759-1	New York Transit (Green)	Q Type 3-Car Subway Set with Proto-Sound 2.0	2007 Volume 1
30-2760-1	New York Transit (Blue)	Q Type 3-Car Subway Set with Proto-Sound 2.0	2007 Volume 1
30-2759-1	Metropolitan Transit	Q Type 3-Car Subway Special #1	Uncataloged Items
30-2760-1	Metropolitan Transit	Q Type 3-Car Subway Special #2	Uncataloged Items
30-2372-1	MTA	R-12 4-Car Subway Set w/Proto-Sound 2.0	2003 Volume 1
30-2373-1	MTA	R-12 4-Car Subway Set w/Proto-Sound 2.0	2003 Volume 1
30-2727-1	MTA	R-12 4-Car Subway Set w/Proto-Sound 2.0	2006 Volume 2
30-2728-1	MTA	R-12 4-Car Subway Set w/Proto-Sound 2.0	2006 Volume 2
30-4122-1	MLB - YankeesT	R-17 4-Car Subway Set w/Proto-Sound 2.0	2004 RTR Catalog
30-4123-1	MLB - MetsT	R-17 4-Car Subway Set w/Proto-Sound 2.0	2004 RTR Catalog
30-2391-1	MTA Graffiti	R-17 4-Car Subway Set with Proto-Sound 2.0	2003 Volume 2
30-2392-1	MTA - Redbird	R-17 4-Car Subway Set with Proto-Sound 2.0	2003 Volume 2
30-2446-1	Metropolitan Transportation Authority	R-26 4-Car Subway Set w/Proto-Sound 2.0	2004 Volume 2
30-2671-1		R62 4-Car Subway Set w/Proto-Sound 2.0	2006 Volume 1
30-2387-1	Alaska	RDC Budd Car Set w/Proto-Sound 2.0	2003 Volume 2
30-2388-1	Boston & Maine	RDC Budd Car Set w/Proto-Sound 2.0	2003 Volume 2
30-2389-1	Baltimore & Ohio	RDC Budd Car Set w/Proto-Sound 2.0	2003 Volume 2
30-2390-1	Chicago & North Western	RDC Budd Car Set w/Proto-Sound 2.0	2003 Volume 2
30-2692-1	BC Rail	RDC Budd Car Set w/Proto-Sound 2.0	2006 Volume 1
30-2693-1	Budd Demonstrator	RDC Budd Car Set w/Proto-Sound 2.0	2006 Volume 1
30-2694-1	Chesapeake & Ohio	RDC Budd Car Set w/Proto-Sound 2.0	2006 Volume 1
30-2695-1	Jersey Central	RDC Budd Car Set w/Proto-Sound 2.0	2006 Volume 1
30-2840-1	MARC	RDC Budd Car Set w/Proto-Sound 2.0	2008 Volume 1
30-2841-1	Santa Fe	RDC Budd Car Set w/Proto-Sound 2.0	2008 Volume 1
30-2842-1	Reading	RDC Budd Car Set w/Proto-Sound 2.0	2008 Volume 1
30-2843-1	Long Island	RDC Budd Car Set w/Proto-Sound 2.0	2008 Volume 1
30-2409-1	Burlington	RS-3 Diesel Engine - With Proto-Sound 2.0	2004 Volume 1
30-2410-1	Canadian National	RS-3 Diesel Engine - With Proto-Sound 2.0	2004 Volume 1
30-2411-1	Jersey Central	RS-3 Diesel Engine - With Proto-Sound 2.0	2004 Volume 1
30-2412-1	Southern	RS-3 Diesel Engine - With Proto-Sound 2.0	2004 Volume 1
30-2605-1	Boston & Maine	RS-3 Diesel Engine - With Proto-Sound 2.0	2005 Volume 2
30-2606-1	Long Island	RS-3 Diesel Engine - With Proto-Sound 2.0	2005 Volume 2
30-2607-1	Monon	RS-3 Diesel Engine - With Proto-Sound 2.0	2005 Volume 2
30-2608-1	Ontario & Northland	RS-3 Diesel Engine - With Proto-Sound 2.0	2005 Volume 2
30-2609-1	Reading	RS-3 Diesel Engine - With Proto-Sound 2.0	2005 Volume 2
30-2610-1	Union Pacific	RS-3 Diesel Engine - With Proto-Sound 2.0	2005 Volume 2
30-2789-1	British Columbia Railway	RS-3 Diesel Engine - With Proto-Sound 2.0	2007 Volume 2
30-2790-1	Louisville & Nashville	RS-3 Diesel Engine - With Proto-Sound 2.0	2007 Volume 2
30-2791-1	New York Central	RS-3 Diesel Engine - With Proto-Sound 2.0	2007 Volume 2
30-2792-1	Pennsylvania	RS-3 Diesel Engine - With Proto-Sound 2.0	2007 Volume 2
30-2895-1	Erie	RS-3 Diesel Engine - With Proto-Sound 2.0	2009 Volume 1
30-2896-1	Lehigh Valley	RS-3 Diesel Engine - With Proto-Sound 2.0	2009 Volume 1
30-2897-1	New Haven	RS-3 Diesel Engine - With Proto-Sound 2.0	2009 Volume 1

30-2898-1	Spokane Portland & Seattle	RS-3 Diesel Engine - With Proto-Sound 2.0	2009 Volume 1
30-2955-1	Gulf, Mobile & Ohio	RS-3 Diesel Engine - With Proto-Sound 2.0	2010 Volume 1
30-2956-1	Providence & Worcester	RS-3 Diesel Engine - With Proto-Sound 2.0	2010 Volume 1
30-2957-1	Canadian National	RS-3 Diesel Engine - With Proto-Sound 2.0	2010 Volume 1
30-2958-1	Burlington Northern	RS-3 Diesel Engine - With Proto-Sound 2.0	2010 Volume 1
30-4177-1	NFL - Pittsburgh Steelers	RS-3 Diesel Engine - With Proto-Sound 2.0	2007 RTR Catalog
30-4178-1	Canadian Pacific	RS-3 Diesel Engine - With Proto-Sound 2.0	2007 RTR Catalog
30-4179-1	Pennsylvania	RS-3 Diesel Engine - With Proto-Sound 2.0	2007 RTR Catalog
30-2793-1	Chicago & North Western	RSD-4 Diesel Engine - With Proto-Sound 2.0	2007 Volume 2
30-2795-1	Santa Fe	RSD-4 Diesel Engine - With Proto-Sound 2.0	2007 Volume 2
30-2796-1	Jersey Central	RSD-4 Diesel Engine - With Proto-Sound 2.0	2007 Volume 2
30-2866-1	Pennsylvania	RSD-4 Diesel Engine - With Proto-Sound 2.0	2008 Volume 2
30-2794-1	Chesapeake & Ohio	RSD-5 Diesel Engine - With Proto-Sound 2.0	2007 Volume 2
30-2867-1	Southern Pacific	RSD-5 Diesel Engine - With Proto-Sound 2.0	2008 Volume 2
30-2868-1	Milwaukee Road	RSD-5 Diesel Engine - With Proto-Sound 2.0	2008 Volume 2
30-2869-1	Western Maryland	RSD-5 Diesel Engine - With Proto-Sound 2.0	2008 Volume 2
30-4144-1	Santa Fe	Scale F-3 R-T-R Deluxe Passenger Train Set w/Proto-Sound 2.0	2005 RTR Catalog
30-4202-1	Santa Fe	Scale F-3 R-T-R Deluxe Passenger Train Set w/Proto-Sound 2.0	2009 RTR Catalog
30-2359-1	Great Northern	SD-45 Diesel Engine w/Proto-Sound 2.0	2003 Volume 1
30-2360-1	Union Pacific	SD-45 Diesel Engine w/Proto-Sound 2.0	2003 Volume 1
30-2361-1	Wisconsin Central	SD-45 Diesel Engine w/Proto-Sound 2.0	2003 Volume 1
30-2362-1	Erie Lackawanna	SD-45 Diesel Engine w/Proto-Sound 2.0	2003 Volume 1
30-2363-1	Susquehanna	SD-45 Diesel Engine w/Proto-Sound 2.0	2003 Volume 1
30-2364-1	Arizona & California	SD-45 Diesel Engine w/Proto-Sound 2.0	2003 Volume 1
30-2659-1	Caterpillar	SD-45 Diesel Engine w/Proto-Sound 2.0	2006 Volume 1
30-2660-1	Pennsylvania	SD-45 Diesel Engine w/Proto-Sound 2.0	2006 Volume 1
30-2661-1	Frisco	SD-45 Diesel Engine w/Proto-Sound 2.0	2006 Volume 1
30-2662-1	Santa Fe	SD-45 Diesel Engine w/Proto-Sound 2.0	2006 Volume 1
30-2702-1	Reading	SD-45 Diesel Engine w/Proto-Sound 2.0	2006 Volume 1
30-2663-1	Santa Fe	SD-60 Diesel Engine With Proto-Sound 2.0	2006 Volume 1
30-2664-1	Norfolk Southern	SD-60 Diesel Engine With Proto-Sound 2.0	2006 Volume 1
30-2665-1	NFL - American Football Conference	SD-60 Diesel Engine With Proto-Sound 2.0	2006 Volume 1
30-2666-1	Union Pacific	SD-60 Diesel Engine With Proto-Sound 2.0	2006 Volume 1
30-2781-1	Burlington Northern	SD-60 Diesel Engine With Proto-Sound 2.0	2007 Volume 2
30-2782-1	Chicago & North Western	SD-60 Diesel Engine With Proto-Sound 2.0	2007 Volume 2
30-2783-1	Conrail	SD-60 Diesel Engine With Proto-Sound 2.0	2007 Volume 2
30-2784-1	CSX	SD-60 Diesel Engine With Proto-Sound 2.0	2007 Volume 2
30-2876-1	Chicago & North Western	SD70ACe Imperial Diesel Engine With Proto-Sound 2.0	2008 Volume 2
30-2877-1	Denver & Rio Grande	SD70ACe Imperial Diesel Engine With Proto-Sound 2.0	2008 Volume 2
30-2878-1	Missouri Pacific	SD70ACe Imperial Diesel Engine With Proto-Sound 2.0	2008 Volume 2
30-2879-1	MKT	SD70ACe Imperial Diesel Engine With Proto-Sound 2.0	2008 Volume 2
30-2880-1	Southern Pacific	SD70ACe Imperial Diesel Engine With Proto-Sound 2.0	2008 Volume 2
30-2881-1	Western Pacific	SD70ACe Imperial Diesel Engine With Proto-Sound 2.0	2008 Volume 2
30-2915-1	Kansas City Southern	SD70ACe Imperial Diesel Engine With Proto-Sound 2.0	2009 Volume 1
30-2916-1	Norfolk Southern	SD70ACe Imperial Diesel Engine With Proto-Sound 2.0	2009 Volume 1
30-2917-1	Canadian National	SD70ACe Imperial Diesel Engine With Proto-Sound 2.0	2009 Volume 1
30-2918-1	BNSF	SD70ACe Imperial Diesel Engine With Proto-Sound 2.0	2009 Volume 1
30-2946-1	Florida East Coast	SD70ACe Imperial Diesel Engine With Proto-Sound 2.0	2009 Volume 2
30-2947-1	George H. Bush	SD70ACe Imperial Diesel Engine With Proto-Sound 2.0	2009 Volume 2
30-2948-1	Electro Motive Division	SD70ACe Imperial Diesel Engine With Proto-Sound 2.0	2009 Volume 2
30-2949-1	Union Pacific	SD70ACe Imperial Diesel Engine With Proto-Sound 2.0	2009 Volume 2
30-2988-1	CSX	SD70ACe Imperial Diesel Engine With Proto-Sound 2.0	2010 Volume 2
30-2990-1	Montana Rail Link	SD70ACe Imperial Diesel Engine With Proto-Sound 2.0	2010 Volume 2

30-2991-1	Union Pacific	SD70ACe Imperial Diesel Engine With Proto-Sound 2.0	2010 Volume 2
30-4194-1	Union Pacific	SD70ACe Imperial Diesel Engine With Proto-Sound 2.0	2008 RTR Catalog
30-4195-1	CSX	SD70ACe Imperial Diesel Engine With Proto-Sound 2.0	2008 RTR Catalog
30-4205-1	Norfolk Southern	SD70ACe Imperial Diesel Engine With Proto-Sound 2.0	2010 RTR Catalog
30-4206-1	BNSF	SD70ACe Imperial Diesel Engine With Proto-Sound 2.0	2010 RTR Catalog
30-4213-1	CSX	SD70ACe Imperial Diesel Engine With Proto-Sound 2.0	2011 RTR Catalog
30-4214-1	Union Pacific	SD70ACe Imperial Diesel Engine With Proto-Sound 2.0	2011 RTR Catalog
30-2461-1	Chicago & North Western	SD-9 Diesel Engine - With Proto-Sound 2.0	2005 Volume 1
30-2462-1	Milwaukee Road	SD-9 Diesel Engine - With Proto-Sound 2.0	2005 Volume 1
30-2463-1	Norfolk Southern	SD-9 Diesel Engine - With Proto-Sound 2.0	2005 Volume 1
30-2464-1	Pennsylvania	SD-9 Diesel Engine - With Proto-Sound 2.0	2005 Volume 1
30-2478-1	Bessemer & Lake Erie	SD-9 Diesel Engine - With Proto-Sound 2.0	2005 Volume 1
30-2479-1	Denver & Rio Grande	SD-9 Diesel Engine - With Proto-Sound 2.0	2005 Volume 1
30-2651-1	John Deere	SD-9 Diesel Engine - With Proto-Sound 2.0	2006 Volume 1
30-2652-1	Chessie	SD-9 Diesel Engine - With Proto-Sound 2.0	2006 Volume 1
30-2653-1	Chicago & Illinois Midland	SD-9 Diesel Engine - With Proto-Sound 2.0	2006 Volume 1
30-2654-1	Duluth, Missabe & Iron Range	SD-9 Diesel Engine - With Proto-Sound 2.0	2006 Volume 1
30-2703-1	Nickel Plate Road	SD-9 Diesel Engine - With Proto-Sound 2.0	2006 Volume 1
30-2704-1	Rio Grande	SD-9 Diesel Engine - With Proto-Sound 2.0	2006 Volume 1
30-2870-1	Baltimore & Ohio	SD-9 Diesel Engine - With Proto-Sound 2.0	2008 Volume 2
30-2871-1	Bessemer & Lake Erie	SD-9 Diesel Engine - With Proto-Sound 2.0	2008 Volume 2
30-2872-1	Burlington	SD-9 Diesel Engine - With Proto-Sound 2.0	2008 Volume 2
30-2873-1	Pennsylvania	SD-9 Diesel Engine - With Proto-Sound 2.0	2008 Volume 2
30-2874-1	Southern	SD-9 Diesel Engine - With Proto-Sound 2.0	2008 Volume 2
30-2875-1	Southern Pacific	SD-9 Diesel Engine - With Proto-Sound 2.0	2008 Volume 2
30-4131-1	Harley-Davidson	SD-90-MAC Diesel Engine w/Proto-Sound 2.0	2005 RTR
30-1433-1	MCG - Coors Light	Silver Bullet Train Set w/Proto-Sound 2.0	2007 Volume 1
30-2742-1	Boston & Maine	SW-1 Diesel Engine w/Proto-Sound 2.0	2007 Volume 1
30-2743-1	Chessie	SW-1 Diesel Engine w/Proto-Sound 2.0	2007 Volume 1
30-2744-1	Lehigh Valley	SW-1 Diesel Engine w/Proto-Sound 2.0	2007 Volume 1
30-2745-1	New York Central	SW-1 Diesel Engine w/Proto-Sound 2.0	2007 Volume 1
30-2746-1	Pennsylvania	SW-1 Diesel Engine w/Proto-Sound 2.0	2007 Volume 1
30-2820-1	Amtrak	SW-1 Switcher Diesel Engine w/Proto-sound2.0	2008 Volume 1
30-2821-1	Reading	SW-1 Switcher Diesel Engine w/Proto-sound2.0	2008 Volume 1
30-2822-1	Southern	SW-1 Switcher Diesel Engine w/Proto-sound2.0	2008 Volume 1
30-2823-1	Southern Pacific	SW-1 Switcher Diesel Engine w/Proto-sound2.0	2008 Volume 1
30-2899-1	Chicago & North Western	SW-1 Switcher Diesel Engine w/Proto-sound2.0	2009 Volume 1
30-2900-1	Milwaukee Road	SW-1 Switcher Diesel Engine w/Proto-sound2.0	2009 Volume 1
30-2901-1	Norfolk & Western	SW-1 Switcher Diesel Engine w/Proto-sound2.0	2009 Volume 1
30-2902-1	Seaboard	SW-1 Switcher Diesel Engine w/Proto-sound2.0	2009 Volume 1
30-2919-1	AB - Rolling Rock	SW-1 Switcher Diesel Engine w/Proto-sound2.0	2009 Volume 1
30-2922-1	Jersey Central Lines	SW-1 Switcher Diesel Engine w/Proto-sound2.0	2009 Volume 2
30-2923-1	Rock Island	SW-1 Switcher Diesel Engine w/Proto-sound2.0	2009 Volume 2
30-2924-1	Chesapeake & Ohio	SW-1 Switcher Diesel Engine w/Proto-sound2.0	2009 Volume 2
30-2925-1	Great Northern	SW-1 Switcher Diesel Engine w/Proto-sound2.0	2009 Volume 2
30-2963-1	Norfolk Southern	SW-1 Switcher Diesel Engine w/Proto-sound2.0	2010 Volume 1
30-2964-1	Amtrak	SW-1 Switcher Diesel Engine w/Proto-sound2.0	2010 Volume 1
30-2965-1	Burlington	SW-1 Switcher Diesel Engine w/Proto-sound2.0	2010 Volume 1
30-2966-1	Chessie	SW-1 Switcher Diesel Engine w/Proto-sound2.0	2010 Volume 1
30-2696-1	Wheeling - Pittsburgh Steel	SW-1200 Switcher Diesel Engine w/Proto-Sound 2.0	Uncataloged Items
30-2697-1	Aliquippa & Southern	SW-1200 Switcher Diesel Engine w/Proto-Sound 2.0	Uncataloged Items
30-2705-1	Katrina Fundraiser	SW-1200 Switcher Diesel Engine w/Proto-Sound 2.0	Uncataloged Items
30-2723-1	Buffalo & Pittsburgh	SW-1500 Switcher Diesel Engine w/Proto-sound2.0	2006 Volume 2

30-2724-1	CSX	SW-1500 Switcher Diesel Engine w/Proto-sound2.0	2006 Volume 2
30-2725-1	Reading	SW-1500 Switcher Diesel Engine w/Proto-sound2.0	2006 Volume 2
30-2726-1	Richmond, Fredericksburg & Potomac	SW-1500 Switcher Diesel Engine w/Proto-sound2.0	2006 Volume 2
30-2747-1	New York & Atlantic	SW-1500 Switcher Diesel Engine w/Proto-sound2.0	2007 Volume 1
30-2748-1	Norfolk Southern	SW-1500 Switcher Diesel Engine w/Proto-sound2.0	2007 Volume 1
30-2749-1	Pittsburgh Industrial Railroad	SW-1500 Switcher Diesel Engine w/Proto-sound2.0	2007 Volume 1
30-2750-1	Union Pacific	SW-1500 Switcher Diesel Engine w/Proto-sound2.0	2007 Volume 1
30-4158-1	Alaska	SW-1500 Switcher Diesel Engine w/Proto-sound2.0	2006 RTR Catalog
30-4159-1	Mon Valley Works	SW-1500 Switcher Diesel Engine w/Proto-sound2.0	2006 RTR Catalog
30-4175-1	Weirton Steel	SW-1500 Switcher Diesel Engine w/Proto-sound2.0	Uncataloged Items
30-2824-1	Canadian National	SW-8 Switcher Diesel Engine w/Proto-Sound 2.0	2008 Volume 1
30-2825-1	MCG - Coors	SW-8 Switcher Diesel Engine w/Proto-Sound 2.0	2008 Volume 1
30-2826-1	Great Northern	SW-8 Switcher Diesel Engine w/Proto-Sound 2.0	2008 Volume 1
30-2827-1	New York Central	SW-8 Switcher Diesel Engine w/Proto-Sound 2.0	2008 Volume 1
30-2454-1	Pittsburgh Brewing Company	SW-9 Switcher Diesel Engine w/Proto-Sound 2.0	Uncataloged Items
30-2611-1	Bangor & Aroostook	SW-9 Switcher Diesel Engine w/Proto-Sound 2.0	2005 Volume 2
30-2612-1	Chicago & North Western	SW-9 Switcher Diesel Engine w/Proto-Sound 2.0	2005 Volume 2
30-2613-1	Wisconsin Central	SW-9 Switcher Diesel Engine w/Proto-Sound 2.0	2005 Volume 2
30-2614-1	Maryland & Pennsylvania	SW-9 Switcher Diesel Engine w/Proto-Sound 2.0	2005 Volume 2
30-2615-1	Baltimore & Ohio	SW-9 Switcher Diesel Engine w/Proto-Sound 2.0	2005 Volume 2
30-2882-1	Boston & Maine	SW-9 Switcher Diesel Engine w/Proto-Sound 2.0	2008 Volume 2
30-2883-1	Chessie	SW-9 Switcher Diesel Engine w/Proto-Sound 2.0	2008 Volume 2
30-2884-1	Frisco	SW-9 Switcher Diesel Engine w/Proto-Sound 2.0	2008 Volume 2
30-2885-1	New York Central	SW-9 Switcher Diesel Engine w/Proto-Sound 2.0	2008 Volume 2
30-2886-1	Pittsburg & Shawmut	SW-9 Switcher Diesel Engine w/Proto-Sound 2.0	2008 Volume 2
30-2887-1	Southern Pacific	SW-9 Switcher Diesel Engine w/Proto-Sound 2.0	2008 Volume 2