

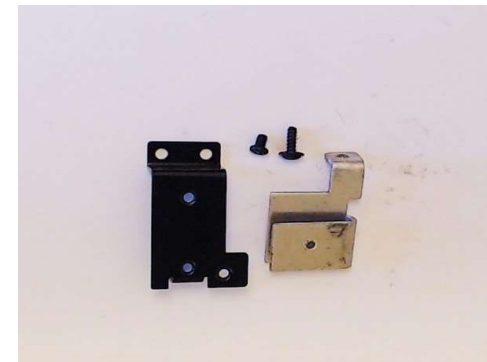
RailKing One Gauge Diesel Locomotives Delivered with Protosound 2.0 - 3Volt Electronics

This document contains the MTH product number, road name, description & catalog the product first appeared in. Use this document to confirm the product you have uses LocoSound electronics

Use the "find" (Ctrl + F) function in Adobe Acrobat to locate the product number of your product. If it appears on this list, then you will want to use the following MTH service parts to replace the factory installed electronics.



AE10000353V



IC0000026

AE10000353V PS 3/2 STACKER / O GAUGE / UNPROGRAMMED / CHYAO SHIUNN CONNECTORS / REPLACES ALL PS2 3V BOARDS

IC0000026 HEAT SINK / PS 3 & PS 3/2 STACKER / ALUMINUM / KIT

Railking One Gauge Steam & Diesel/Electric w/ Protosound 2.0 - 3 Volt

MTH #	Road Name	Product	Catalog
70-2001-1	Amtrak	Dash-8 Diesel Engine (4-Wheel Truck) - With Proto-Sound 2.0	2001 Volume 2
70-2004-1	Chicago & North Western	Dash-8 Diesel (6-Wheel Truck) w/PS2	2001 Volume 2
70-2006-1	Santa Fe	Dash-8 Diesel Engine (4-Wheel Truck) - With Proto-Sound 2.0	2001 Volume 2
70-2007-1	Pennsylvania	F-3 AA Diesel Set - With Proto-Sound 2.0	2004 RK 1 Gauge Volume 1
70-2008-1	New York Central	F-3 AA Diesel Set - With Proto-Sound 2.0	2004 RK 1 Gauge Volume 1
70-2012-1	Western Pacific	F-3 AA Diesel Set - With Proto-Sound 2.0	2004 RK 1 Gauge Volume 1
70-2013-1	Santa Fe	F-3 AA Diesel Set - With Proto-Sound 2.0	2004 RK 1 Gauge Volume 1
70-2014-1	Baltimore & Ohio	F-3 AA Diesel Set - With Proto-Sound 2.0	2004 RK 1 Gauge Volume 1
70-2015-1	Caterpillar	F-3 AA Diesel Set - With Proto-Sound 2.0	2004 RK 1 Gauge Volume 1
70-2016-1	Texas Special	F-3 AA Diesel Set - With Proto-Sound 2.0	2004 RK 1 Gauge Volume 1
70-2017-1	Norfolk Southern	Dash-8 Diesel Engine (Narrow Nose) w/Proto-Sound 2.0	2004 RK 1 Gauge Volume 1
70-2018-1	Conrail	Dash-8 Diesel Engine (Narrow Nose/4-Wheel Truck) w/PS2.0	2004 RK 1 Gauge Volume 1
70-2019-1	CSX	Dash-8 Diesel Engine (Narrow Nose/4-Wheel Truck) w/PS 2.0	2004 RK 1 Gauge Volume 1
70-2020-1	Southern Pacific	Dash-8 Diesel Engine (Narrow Nose/4-Wheel Truck) w/PS 2.0	2004 RK 1 Gauge Volume 1
70-2021-1	Chicago & North Western	Dash-8 Diesel Engine (Narrow Nose) w/Proto-Sound 2.0	2004 RK 1 Gauge Volume 1
70-2022-1	Santa Fe	Dash-8 Diesel Engine (Narrow Nose/4-Wheel Truck) w/PS 2.0	2004 RK 1 Gauge Volume 1
70-2023-1	Amtrak	Dash-8 Diesel Engine (4-Wheel Truck) - With Proto-Sound 2.0	2005 RK 1 Gauge
70-2027-1	Conrail	Dash-8 Diesel Engine (Narrow Nose/4-Wheel Truck) w/Proto-Sound 2.0	2005 RK 1 Gauge
70-2028-1	Providence & Worcester	Dash-8 Diesel Engine (Narrow Nose/4-Wheel Truck) w/Proto-Sound 2.0	2005 RK 1 Gauge
70-2030-1	Susquehanna	Dash-8 Diesel Engine (Narrow Nose/6-Wheel Truck) w/Proto-Sound 2.0	2005 RK 1 Gauge
70-2031-1	Union Pacific	Dash-8 Diesel Engine (Narrow Nose/4-Wheel Truck) w/Proto-Sound 2.0	2005 RK 1 Gauge
70-2033-1	Santa Fe	Alco PA AA Diesel Set - With Proto-Sound 2.0	2007 RK 1 Gauge Volume 1
70-2034-1	Delaware & Hudson	Alco PA AA Diesel Set - With Proto-Sound 2.0	2007 RK 1 Gauge Volume 1
70-2035-1	New Haven	Alco PA AA Diesel Set - With Proto-Sound 2.0	2007 RK 1 Gauge Volume 1
70-2036-1	Pennsylvania	Alco PA AA Diesel Set - With Proto-Sound 2.0	2007 RK 1 Gauge Volume 1
70-2037-1	Rio Grande	Alco PA AA Diesel Set - With Proto-Sound 2.0	2007 RK 1 Gauge Volume 1
70-2038-1	Southern Pacific	Alco PA AA Diesel Set - With Proto-Sound 2.0	2007 RK 1 Gauge Volume 1
70-2039-1	Union Pacific	Alco PA AA Diesel Set - With Proto-Sound 2.0	2007 RK 1 Gauge Volume 1
70-2040-1	Canadian National	F-7 AA Diesel Set - With Proto-Sound 2.0	2007 RK 1 Gauge Volume 1
70-2041-1	Chicago & North Western	F-7 AA Diesel Set - With Proto-Sound 2.0	2007 RK 1 Gauge Volume 1
70-2042-1	Northern Pacific	F-7 AA Diesel Set - With Proto-Sound 2.0	2007 RK 1 Gauge Volume 1
70-2043-1	Santa Fe	F-7 AA Diesel Set - With Proto-Sound 2.0	2007 RK 1 Gauge Volume 1
70-2045-1	New York Central	VO 1000 Diesel Engine - With Proto-Sound 2.0	2007 RK 1 Gauge Volume 1
70-2046-1	Santa Fe	VO 1000 Diesel Engine - With Proto-Sound 2.0	2007 RK 1 Gauge Volume 1
70-2047-1	Pennsylvania	VO 1000 Diesel Engine - With Proto-Sound 2.0	2007 RK 1 Gauge Volume 1
70-2048-1	Union Pacific	VO 1000 Diesel Engine - With Proto-Sound 2.0	2007 RK 1 Gauge Volume 1
70-2049-1	Reading	VO 1000 Diesel Engine - With Proto-Sound 2.0	2007 RK 1 Gauge Volume 1
70-2050-1	Seaboard Coast Line	VO 1000 Diesel Engine - With Proto-Sound 2.0	2007 RK 1 Gauge Volume 1

70-2051-1	Western Maryland	VO 1000 Diesel Engine - With Proto-Sound 2.0	2007 RK 1 Gauge Volume 1
70-2063-1	AB - Budweiser	VO 1000 Diesel Engine - With Proto-Sound 2.0	2010 RK 1 Gauge Volume 1
70-2064-1	MCG - Coors	VO 1000 Diesel Engine - With Proto-Sound 2.0	2010 RK 1 Gauge Volume 1
70-2065-1	Great Northern	VO 1000 Diesel Engine - With Proto-Sound 2.0	2010 RK 1 Gauge Volume 1
70-2066-1	Harley-Davidson	VO 1000 Diesel Engine - With Proto-Sound 2.0	2010 RK 1 Gauge Volume 1
70-2067-1	Northern Pacific	VO 1000 Diesel Engine - With Proto-Sound 2.0	2010 RK 1 Gauge Volume 1
70-2068-1	Southern	VO 1000 Diesel Engine - With Proto-Sound 2.0	2010 RK 1 Gauge Volume 1
70-2069-1	Southern Pacific	VO 1000 Diesel Engine - With Proto-Sound 2.0	2010 RK 1 Gauge Volume 1
70-2070-1	Baltimore & Ohio	VO 1000 Diesel Engine - With Proto-Sound 2.0	2010 RK 1 Gauge Volume 1
70-2076-1	Santa Fe	Dash-8 Diesel Engine (Narrow Nose/4-Wheel Truck) w/Proto-Sound 2.0	2010 RK 1 Gauge Volume 1
70-2077-1	Conrail	Dash-8 Diesel Engine (Narrow Nose/4-Wheel Truck) w/Proto-Sound 2.0	2010 RK 1 Gauge Volume 1
70-2078-1	CSX	Dash-8 Diesel Engine (Narrow Nose/4-Wheel Truck) w/Proto-Sound 2.0	2010 RK 1 Gauge Volume 1
70-2078-1	CSX	Dash-8 Diesel Engine (Narrow Nose/4-Wheel Truck) w/Proto-Sound 2.0	2010 RK 1 Gauge Volume 1
70-2079-1	BNSF	Dash-8 Diesel Engine (Narrow Nose/4-Wheel Truck) w/Proto-Sound 2.0	2010 RK 1 Gauge Volume 1
70-2080-1	MARS - M&Ms	F-7 A Unit Diesel - With Proto-Sound 2.0	2010 RK 1 Gauge Volume 1
70-2081-1	Santa Fe	Alco PA A-Unit Diesel - With Proto-Sound 2.0	2010 RK 1 Gauge Volume 1
70-2082-1	Pennsylvania	Alco PA A-Unit Diesel - With Proto-Sound 2.0	2010 RK 1 Gauge Volume 1
70-2083-1	Denver & Rio Grande	Alco PA A-Unit Diesel - With Proto-Sound 2.0	2010 RK 1 Gauge Volume 1
70-2084-1	Southern Pacific	Alco PA A-Unit Diesel - With Proto-Sound 2.0	2010 RK 1 Gauge Volume 1
70-2085-1	Union Pacific	Alco PA A-Unit Diesel - With Proto-Sound 2.0 - With Proto-Sound 2.0	2010 RK 1 Gauge Volume 1
70-2086-1	American Freedom	Alco PA A-Unit Diesel - With Proto-Sound 2.0	2010 RK 1 Gauge Volume 1
70-2087-1	New York Central	Alco PA A-Unit Diesel - With Proto-Sound 2.0	2010 RK 1 Gauge Volume 1
70-2088-1	Santa Fe	F-7 A Unit Diesel - With Proto-Sound 2.0	2010 RK 1 Gauge Volume 1
70-2089-1	Southern Pacific	F-7 A Unit Diesel - With Proto-Sound 2.0	2010 RK 1 Gauge Volume 1
70-2090-1	Union Pacific	F-7 A Unit Diesel - With Proto-Sound 2.0	2010 RK 1 Gauge Volume 1
70-2091-1	Great Northern	F-7 A Unit Diesel - With Proto-Sound 2.0	2010 RK 1 Gauge Volume 1
70-5001-1	Pennsylvania	GG-1 Electric Engine With Proto-Soundr 2.0	2007 RK 1 Gauge Volume 1
70-5002-1	Pennsylvania	GG-1 Electric Engine With Proto-Soundr 2.0	2007 RK 1 Gauge Volume 1
70-5003-1	Pennsylvania	GG-1 Electric Engine With Proto-Soundr 2.0	2007 RK 1 Gauge Volume 1
70-5004-1	Pennsylvania	GG-1 Electric Engine With Proto-Soundr 2.0	2007 RK 1 Gauge Volume 1
70-5005-1	Pennsylvania	GG-1 Electric Engine With Proto-Soundr 2.0	2007 RK 1 Gauge Volume 1
70-5006-1	Amtrak	GG-1 Electric Engine With Proto-Soundr 2.0	2007 RK 1 Gauge Volume 1